



SLOUGH MULTIFUEL EXTENSION PROJECT

Planning Inspectorate Ref. EN010129

The Slough Multifuel Extension Order

Land at Edinburgh Avenue, Slough, SL1 4TU

**Document Ref: 1.4 – Notices for Non-Statutory and Statutory
Publicity**

The Planning Act 2008

The Infrastructure Planning (Applications: Prescribed Forms and Procedure)
Regulations 2009 – Regulation 5(2)(q)



Applicant: SSE Slough Multifuel Limited

September 2022

DOCUMENT HISTORY

Document Ref	1.4		
Revision	1.0		
Author	Nathan Cheung (NC)		
Signed	NC	Date	
Approved By	Geoff Bullock (GB)		
Signed	GB	Date	
Document Owner	DWD		

GLOSSARY

Abbreviation	Description
BEIS	Business, Energy and Industrial Strategy
EIA	Environmental Impact Assessment
ES	Environmental Statement
MW	Megawatts
NSIP	Nationally Significant Infrastructure Project
PA 2008	The Planning Act 2008W
SHP	Slough Heat and Power
SMF	Slough Multifuel
SoCC	Statement of Community Consultation
SoS	Secretary of State
TCPA	Town and Country Planning Act 1990

CONTENTS

1.0 INTRODUCTION	4
1.1 Overview	4
1.2 The Applicant	4
1.3 The Proposed Project Site	4
1.4 The Proposed Project	5
1.5 The Purpose and Structure of this Document	5
2.0 NOTICES FOR STAGE 1 CONSULTATION.....	7
3.0 NOTICES FOR STAGE 2 CONSULTATION.....	8

TABLES

Table 3.1 Section 47 PA2008 SoCC Publication Notice.....	8
Table 3.3 Section 48 PA 2008 and APFP regulation 4(2)) Newspaper Notices	8

APPENDICES

APPENDIX A: STAGE 1 NEWSPAPER NOTICE	9
APPENDIX B: STAGE 1 NEWSPAPER NOTICE AS PUBLISHED	10
APPENDIX C: SOCC NOTICE	11
APPENDIX D: SOCC NOTICE AS PUBLISHED	12
APPENDIX E: STAGE 2 SECTION 48 DUTY TO CONSULT LOCAL COMMUNITY NEWSPAPER NOTICE	13
APPENDIX F: STAGE 2 SECTION 48 DUTY TO CONSULT LOCAL COMMUNITY NEWSPAPER NOTICE AS PUBLISHED.....	14
APPENDIX G: STAGE 2 SECTION 48 SITE NOTICE	15
APPENDIX H: STAGE 2 SECTION 48 NOTICE SITE MAP AND PHOTOS	16
APPENDIX I: SAMPLE EIA REGULATION 13 LETTER	17

1.0 INTRODUCTION

1.1 Overview

- 1.1.1 This Notices for Non-Statutory and Statutory Publicity document (Document Ref. 1.4) has been prepared on behalf of SSE Slough Multifuel Limited ('the Applicant'). It forms part of the application (the 'Application') for a Development Consent Order (a 'DCO'), that has been submitted to the Secretary of State (the 'SoS') for Business, Energy and Industrial Strategy ('BEIS'), under Section 37 of 'The Planning Act 2008' (the 'PA 2008').
- 1.1.2 The Applicant is seeking development consent for the extension of the consented Slough Multifuel Facility, an energy from waste electricity generating station, on land at the Slough Trading Estate, Slough.
- 1.1.3 A DCO is required for the extension (the 'Proposed Project') as it falls within the definitions and thresholds for a 'Nationally Significant Infrastructure Project' (a 'NSIP') under Sections 14(1)(a) and 15(1)(2)(a) and (c) of the PA 2008, being the extension of an onshore electricity generating station in England, which when extended will have a capacity of more than 50 megawatts ('MW').

1.2 The Applicant

- 1.2.1 The Applicant, SSE Slough Multifuel Limited ('SMF'), is a 50:50 joint venture between SSE Thermal and Copenhagen Infrastructure Partners ('CIP').
- 1.2.2 SSE Thermal, part of the FTSE-listed SSE plc, is a leading developer, owner and operator of flexible generation, energy-from-waste, and energy storage assets, with over 600 direct employees across the UK and Ireland. SSE Thermal's vision is to become the leading provider of flexible thermal energy in a net-zero world. SSE Generation Limited was granted planning permission in June 2017 to construct the Slough Multifuel Facility (the 'Consented Development') at the Site. SSE currently operates the existing Slough Heat and Power Plant at the Slough Trading Estate through a company called Slough Heat and Power Limited.
- 1.2.3 CIP was founded in 2012 and is a fund management company specialising in offering tailor made investment in energy infrastructure assets globally, in particular within the renewable energy sector. CIP is a renewable market pioneer with involvement in some of the World's largest offshore wind projects and other major energy infrastructure projects in North-Western Europe, North America, and Asia Pacific. CIP has extensive biomass and energy from waste experience in the UK.

1.3 The Proposed Project Site

- 1.3.1 The Proposed Project Site (the 'Site') lies entirely within the administrative boundary of Slough Borough Council, a unitary authority, and is located either side of Edinburgh Avenue within the Slough Trading Estate (National Grid Reference SU 953 814) approximately 2.5 kilometres north west of Slough Town Centre.
- 1.3.2 The Site extends to approximately 2.8 hectares in area and was acquired by SSE in 2008. It forms part of the original Slough Heat and Power Plant site. The consented development, which was originally consented in June 2017 under 'The Town and Country Planning Act 1990' (the 'TCPA') (Planning Permission Refs. P/00987/051 (being a Section 73 variation of P/00987/024 and P/00987/035) and P/00987/025, P/00987/052 and P/19876/000), is currently being constructed at the Site. Construction of the Consented Development at the Site is well advanced and is currently expected to be completed by Quarter 4 2024.

1.3.3 A more detailed description of the Site and its surroundings is provided at Chapter 4 'Existing Site Conditions' of the Environmental Statement ('ES') Volume 1 (Document Ref. 6.2.4).

1.4 The Proposed Project

1.4.1 The Proposed Project is an extension to the Consented Development comprising the carrying out of the following physical works (Work No. 1 at Schedule 1 'Authorised Development' of the draft DCO, Document Ref. 2.1) which will increase the efficiency and gross installed capacity of the extended generating station from just under 50MW to circa 60MW:

- a boiler primary air preheating system comprising heat exchanger bundles, pipework, valves, pipe supports, thermal insulation, instrumentation, cabling and containment;
- a boiler secondary air preheating system comprising heat exchanger bundles, pipework, valves, pipe supports, thermal insulation, instrumentation, cabling and containment; and
- mechanical modifications to the actuated steam turbine inlet control valve to allow steam capacity to be increased.

1.4.2 The physical works comprised in the extension are 'engineering operations' and therefore 'development' for the purposes of Section 31 of the PA 2008.

1.4.3 It is the extension which is the NSIP pursuant to section 14(1)(a) and 15(1) of the PA 2008, and the development forming part of the extension (being the Authorised Development) which requires development consent pursuant to section 31 of the PA 2008. The Consented Development is consented and constructed pursuant to the TCPA. It is not an NSIP, nor does it form part of one.

1.4.4 Separately, the extended generating station requires an ancillary authorisation to 'operate' at over 50MW pursuant to section 36 of the Electricity Act 1989, and this is included within the DCO.

1.4.5 The Proposed Project also includes associated development within the meaning of Section 115(2) of the PA 2008, including temporary construction laydown areas, contractor facilities, vehicle parking and cycle storage facilities.

1.4.6 The Proposed Project will not increase the throughput of waste, vehicle movements, emissions, or operating hours at the Slough Multifuel Facility, and will not alter the scale or external appearance of the consented buildings and structures.

1.4.7 A more detailed description of the Proposed Project is provided at Schedule 1 'Authorised Development' of the draft DCO and Chapter 2 'Proposed Project' in ES Volume 1 (Document Ref. 6.2.2) and the area within which the physical works are to occur are denoted by the hatched area on the Works Plan (Document Ref. 4.3).

1.5 The Purpose and Structure of this Document

1.5.1 The primary purpose of this document is to list and provide copies of the notices that have been published in national and local newspapers and other relevant publications, erected in the vicinity of the Site and sent to prescribed persons, where relevant, during the Applicant's pre-application consultation on the Proposed Project. This includes the Applicants' Stage 1 (informal) Consultation (15 November 2021 to 17 December 2021), Stage 2 (statutory) Consultation (5 May 2022 to 17 June 2022).

1.5.2 This document has been prepared in order to demonstrate compliance with the statutory publicity requirements of the PA 2008, 'The Infrastructure Planning (Applications: Prescribed Forms and Procedure) Regulations 2009 (as amended)' (the 'APFP

Regulations'), 'The Infrastructure Planning (Environmental Impact Assessment) Regulations 2017' (the '2017 EIA Regulations') and the Planning Inspectorate's Advice Note 6: Preparation and submission of application documents (November 2019).

- 1.5.3 The Stage 1 notices are listed at Section 2 with the Stage 2 statutory notices listed at Section 3. Copies of the notices and related evidence are provided in the appendices.

2.0 NOTICES FOR STAGE 1 CONSULTATION

2.1.1 The Stage 1 Consultation on the Proposed Project was carried out by SSE from 15 November 2021 to 17 December 2021 this included publicising a notice in the Slough Observer on 19 November 2021 as listed in **Table 2.1** below.

Table 2.1 Stage 1 Consultation Notice

NEWSPAPER	DATE
Slough Observer	19 November 2022

2.1.2 A sample copy of the notice is included in **Appendix 2.1**. A copy of the notice as published in the Slough Observer is provided in **Appendix 2.2**

3.0 NOTICES FOR STAGE 2 CONSULTATION

- 3.1.1 The statutory notices that have been published in national and local newspapers, sent to consultees, and erected in the vicinity of the Proposed Development Site for the consultation on and publicity of the Proposed Development, along with notices published in respect of the Statement of Community Consultation ('SoCC'), are listed in **Table 3.1** below.
- 3.1.2 The SoCC notice was subsequently published in in the Slough Observer on 1 April 2022. A sample copy of the notice and copy as published is contained in **Appendices 3.1 and 3.2**.

Table 3.1 Section 47 PA2008 SoCC Publication Notice

NEWSPAPER	DATE
Slough Observer	April 2022

- 3.1.3 The Stage 2 Consultation took place from 5 May 2022 to 17 June 2022. This included: publicity in accordance with Section 48 'Duty to publicise' and Environmental Impact Assessment ('EIA') Regulation 13.
- 3.1.4 The Section 48 Duty to Consult local community' notices were published by SSE Generation Limited in a national newspaper on 5 May 2022, a local newspaper on the 6 and 13 May 2022, and in the London Gazette on 5 May 2022.

Table 3.2 Section 48 PA 2008 and APFP regulation 4(2)) Newspaper Notices

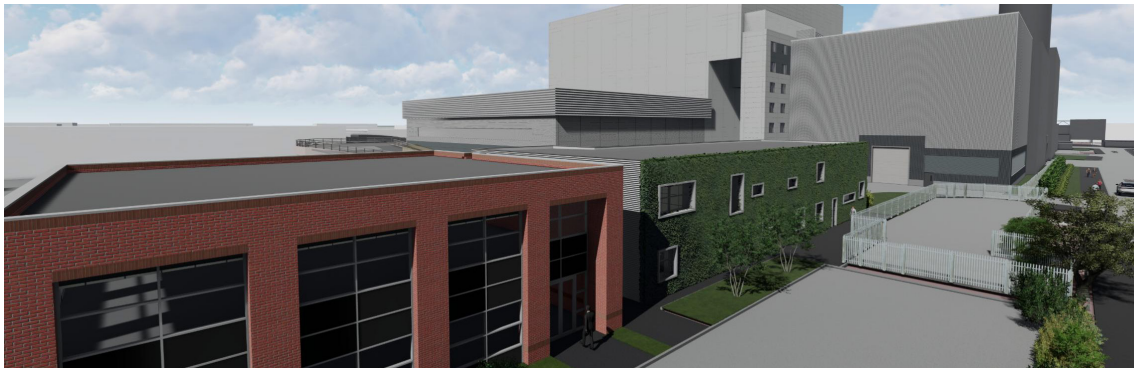
NEWSPAPER	DATE
Daily Telegraph	5 May 2022
Slough Observer	6 and 13 May 2022
London Gazette	5 May 2022

- 3.1.5 A sample copy of the Section 48 Notice and copy of the notice as published in the newspapers are provided at **Appendices 3.3 and 3.4**. In addition, Section 48 notices along with site location plans were erected at locations around the Site boundary. A sample copy of this notice and photos of the notice erected around the Site along with a plan showing the location of the notice are contained in **Appendices 3.5 and 3.6**.
- 3.1.6 A sample copy of the letter sent by the Applicant to EIA consultees enclosing the Section 48 Notice, in accordance with EIA Regulation 13, can be found in **Appendix 3.7**.

APPENDIX 2.1: STAGE 1 NEWSPAPER NOTICE

|| SLOUGH MULTIFUEL PROJECT COMMUNITY UPDATE

|| Invitation to provide views on proposed change to existing application



SSE Slough Multifuel Limited, a joint venture between SSE and Copenhagen Infrastructure Partners (CIP) is constructing a new Multifuel Plant at the Slough Heat and Power (SHP) site on the Slough Trading Estate.

The existing planning permission for the Project, granted by Slough Borough Council in May 2017, allows the Multifuel Plant to generate up to 50 megawatts (MW) of electricity. We are now seeking to increase the efficiency of the Plant so that it can generate up to 60 MW of electricity.

Because we want to increase the generating capacity of the Multifuel Plant to more than 50 MW we need to obtain a Development Consent Order (DCO) from the Secretary of State for Business, Energy and Industrial Strategy.

|| Have your say

As part of the DCO process we would welcome your feedback on our proposals to increase the efficiency of the Multifuel Plant.

To get involved and to find out more information, please visit our website

<https://www.ssethermal.com/energy-from-waste/slough-multifuel>

A Comments Form is available on the website.

**Please provide all comments by:
Friday 17 December 2021 at 5pm.**



APPENDIX 2.2: STAGE 1 NEWSPAPER NOTICE AS PUBLISHED

Plug pulled on festive switch-on

By James Bagley

A LITTLE Christmas joy won't be coming to Slough in the form of a big lights switch on this year as the council confirms it has "no plans" to do so due to Covid.

Last year, all local authorities cancelled their annual Christmas lights switch-on events out of fears of spreading the coronavirus.

But thanks to the vaccine roll-out, most councils – such as the neighbouring Royal Borough of Windsor and Maidenhead – have organised events for residents to see the lights switch-on in their respective decorated high street.

However, Slough Borough Council said it will not be organising such an event this year due to Covid-19 – but will still be providing Xmas lights in the High Street, Farnham Road, and Harrow Market in Langley.

A spokesperson for the council denied they cancelled the event due to the gargantuan financial situation the local authority is in.

Having heard the Christmas lights switch-on won't go ahead,



Xmas Lights light the High Street. Slough Christmas Lights Switch On. Picture by Mike Swift

local radio station Asian Star Radio approached the council and offered to pick up the core costs as a "gesture" and thought their experience in event management will relieve pressure on the council.

Speaking to the Local Democracy Reporting Service, the station's managing director Ray Sidique said they wanted to spread

"Christmas cheer in the town" given the toll the pandemic has had in Slough over past months.

It also had the backing of Slough's MP, the Mayor, and some councillors.

But he said the event is now a "no-go" after the council told them it was "too short notice" to hold the event on November 25 as

they will have to apply to do the event and attend safety advisory group meetings – which take a long time to sort out.

Mr Siddique said: "It was just a gesture to see what we could do for the citizens of Slough for Christmas. Nothing more, nothing less."

"We were going to put the money in and it's not like we're going

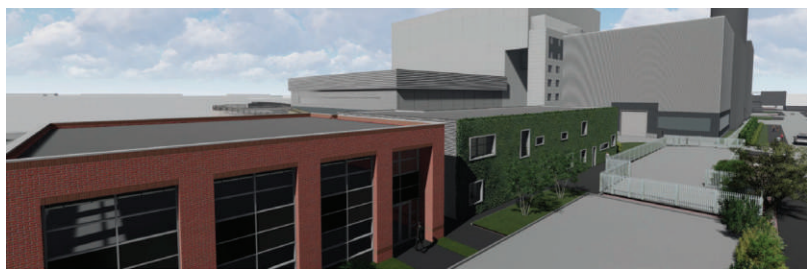
to make any profit from it.

"It's not something we're feeling angry at towards the council, but the council don't feel that it's not enough time and, at the end of the day, due to the Covid situation they don't want us to pursue."

He added they will not be pursuing this any further unless the council wants to "play ball".

SLOUGH MULTIFUEL PROJECT COMMUNITY UPDATE

Invitation to provide views on proposed change to existing planning consent



SSE Slough Multifuel Limited, a joint venture between SSE and Copenhagen Infrastructure Partners (CIP) is constructing a new Multifuel Plant at the Slough Heat and Power (SHP) site on the Slough Trading Estate.

The existing planning permission for the Project, granted by Slough Borough Council in May 2017, allows the Multifuel Plant to generate up to 50 megawatts (MW) of electricity. We are now seeking to increase the efficiency of the Plant so that it can generate up to 60 MW of electricity.

Because we want to increase the generating capacity of the Multifuel Plant to more than 50 MW we need to obtain a Development Consent Order (DCO) from the Secretary of State for Business, Energy and Industrial Strategy.

Have your say

As part of the DCO process we would welcome your feedback on our proposals to increase the efficiency of the Multifuel Plant.

To get involved and to find out more information, please visit our website

A Comments Form is available on the website.

Please provide all comments by:
Friday 17 December 2021 at 5pm.



Please mention the

Slough & Windsor
OBSERVER

when replying to adverts



APPENDIX 3.1: SOCC NOTICE



THE SLOUGH MULTIFUEL EXTENSION PROJECT

The Planning Act 2008 - Section 47(6)(a) 'Notice publicising the statement of community consultation'

Notice is hereby given that SSE Slough Multifuel Limited (the 'Applicant'), intends to submit an application to the Secretary of State for Business, Energy and Industrial Strategy for development consent under Section 37 'Applications for orders granting development consent' of The Planning Act 2008 (the 'PA 2008'), to authorise the works to increase the efficiency and electrical output of the consented Slough Multifuel Facility generating station from its permitted capacity of up to 50 megawatts (MW), originally consented on 2nd June 2017 under the Town and Country Planning Act 1990 ('the Consented Development'), to up to 60MW electrical output, known as the 'Slough Multifuel Extension Project' or the 'Project'. The Project is located on land either side of Edinburgh Avenue, Slough Trading Estate, Slough, SL1 4TU.

As the Project would increase the capacity of the Slough Multifuel Facility generating station to more than 50MW, it requires development consent (granted in the form of a Development Consent Order (a 'DCO')) pursuant to Sections 31, 14(1)(a) and 15 of the PA 2008.

The Project includes different and additional technology within the buildings being constructed for the Consented Development that can achieve a higher electrical output from the same fuel throughput, along with some limited external works (an external above ground pipe run on a consented pipe rack alongside other consented pipes). The Project also involves the mechanical modification of the Consented Development and provision of additional systems including:

- heat exchanger bundles (internal to the existing Consented Development building envelope);
- external and internal above ground pipework and valves;
- pipe supports (external and internal);
- thermal insulation (external and internal works);
- instrumentation (internal to the existing Consented Development building envelope);
- cabling and containment (internal); and
- mechanical modifications to the steam turbine inlet control system (internal works).

The Applicant has a duty to consult the local community about the Project under Section 47 of the PA 2008. Section 47(1) requires an applicant for development consent to prepare a statement (a 'Statement of Community Consultation' or 'SoCC') setting out how they propose to consult people living within the vicinity of the land to which their proposals relate. Section 47(7) requires the applicant to carry out the consultation in accordance with the proposals set out within the SoCC.

The Project is an Environmental Impact Assessment ('EIA') development for the purposes of 'The Infrastructure Planning (Environmental Impact Assessment) Regulations 2017'. The Applicant is therefore required to carry out an EIA of the Project and to submit an Environmental Statement with the DCO application, assessing the likely significant effects arising from the Project on the environment.

APPENDIX 3.2: SOCC NOTICE AS PUBLISHED

Antique & Craft Fairs

Grandma's Attic Antiques & Collectors Fairs

Woking Leisure Centre

Woking Park, Kingfield Road, Woking. GU22 9BA

Sunday 3 April

Admission £3 (Trade early 9am £4.00) | Open 10am - 4pm

ExchangeandMart



Houses & Flats To Let

LUXURY FULLY FURNISHED STUDIO

In Loudwater.

Cutlery, crockery, all bills, internet included. Non smoker

£880pcm

LOCALiQ

Support local traders.



Support local businesses, they've missed YOU!

LOCALiQ

Your digital marketing expert.

NOTICES

email:

Church and Religious Notices | Tenders and Contracts | Goods Vehicle Operator Licences

Goods Vehicle Operator Licences

Around Noon (London) Limited of 762A/763A Henley Road, Slough Trading Estate, SL1 4JW, Slough, Berkshire is applying for a licence to use 762A/763A Henley Road, Slough Trading Estate, SL1 4JW, Slough, Berkshire as an operating centre for 3 goods vehicles and 0 trailers.

Owners or occupiers of land (including buildings) near the operating centre(s) who believe that their use or enjoyment of that land would be affected, should make written representations to the Traffic Commissioner at Hillcrest House, 386 Harehills Lane, Leeds LS9 6NF, stating their reasons, within 21 days of this notice. Representors must at the same time send a copy of their representations to the applicant at the address given at the top of this notice. A Guide to Making Representations is available from the Traffic Commissioner's Office.

Goods Vehicle Operator's Licence

Daniel Goldman, Robert Goldman and Diane Goldman trading as SMG Metals of 4/4a Accommodation Road, London NW11 8ED is applying to change an existing license as follows. To keep an extra 1 goods vehicles at the operating centre at Wilton Farm, Marlow Road, Little Marlow SL7 3RR.

Owners or occupiers of land (including builders) near the operating centre(s) who believe that their use or enjoyment of that land would be affected, should make written representations to the Traffic Commissioner at Hillcrest House, 386 Harehills Lane, Leeds, LS9 6NF, stating their reasons, within 21 days of this notice. Representors must at the same time send a copy of their representations to the applicant at the address given at the top of this notice. A guide to Making Representations is available from the Traffic Commissioner's office.

Goods Vehicle Operator's Licence

William Emerson Ltd of Downy Fields, Hodge Lane, Hatchet Lane, Winkfield, Windsor, Berks SL4 2DT is applying to change an existing licence as follows. To keep 1 extra goods vehicle and 0 trailers at the operating centre Downy Fields, Hodge Lane, Hatchet Lane, Winkfield, Windsor, Berks SL4 2DT.

Owners and occupiers of land (including buildings) near the operating centre who believe that their use or enjoyment of that land would be affected, should make written representation to the Traffic Commissioner at Hillcrest House, 386 Harehills Lane, Leeds, LS9 6NF, stating their reasons, within 21 days of this notice. Representors must at the same time send a copy of their representations to the applicant at the address given at the top of this notice. A Guide to Making Representations is available from the Traffic Commissioner's office.

Planning Notices



THE SLOUGH MULTIFUEL EXTENSION PROJECT

The Planning Act 2008 - Section 47(6)(a) 'Notice publicising the statement of community consultation'

Notice is hereby given that SSE Slough Multifuel Limited (the 'Applicant'), intends to submit an application to the Secretary of State for Business, Energy and Industrial Strategy for development consent under Section 37 'Applications for orders granting development consent' of The Planning Act 2008 (the 'PA 2008'), to authorise the works to increase the efficiency and electrical output of the consented Slough Multifuel Facility generating station from its permitted capacity of up to 50 megawatts (MW), originally consented on 2nd June 2017 under the Town and Country Planning Act 1990 ('the Consented Development'), to up to 60MW electrical output, known as the 'Slough Multifuel Extension Project' or the 'Project'. The Project is located on land either side of Edinburgh Avenue, Slough Trading Estate, Slough, SL1 4TU.

As the Project would increase the capacity of the Slough Multifuel Facility generating station to more than 50MW, it requires development consent (granted in the form of a Development Consent Order (a 'DCO')) pursuant to Sections 31, 14(1)(a) and 15 of the PA 2008.

The Project includes different and additional technology within the buildings being constructed for the Consented Development that can achieve a higher electrical output from the same fuel throughput, along with some limited external works (an external above ground pipe run on a consented pipe rack alongside other consented pipes). The Project also involves the mechanical modification of the Consented Development and provision of additional systems including:

- heat exchanger bundles (internal to the existing Consented Development building envelope);
• external and internal above ground pipework and valves;
• pipe supports (external and internal);
• thermal insulation (external and internal works);
• instrumentation (internal to the existing Consented Development building envelope);
• cabling and containment (internal); and
• mechanical modifications to the steam turbine inlet control system (internal works).

The Applicant has a duty to consult the local community about the Project under Section 47 of the PA 2008. Section 47(1) requires an applicant for development consent to prepare a statement (a 'Statement of Community Consultation' or 'SoCC') setting out how they propose to consult people living within the vicinity of the land to which their proposals relate. Section 47(7) requires the applicant to carry out the consultation in accordance with the proposals set out within the SoCC.

The Project is an Environmental Impact Assessment ('EIA') development for the purposes of 'The Infrastructure Planning (Environmental Impact Assessment) Regulations 2017'. The Applicant is therefore required to carry out an EIA of the Project and to submit an Environmental Statement with the DCO application, assessing the likely significant effects arising from the Project on the environment. Environmental information that the Applicant currently has will be made available during the consultation on Project in the form of a Preliminary Environmental Information ('PEI') Report. There will be an opportunity to view and comment upon the PEI Report during the consultation, and details of this are included in the SoCC.

Section 47(6) requires an applicant for development consent to make the SoCC available for inspection by the public in a way that is reasonably convenient for people living in the vicinity of the land to which the project relates. In accordance with Section 47(6) this notice confirms below when and how a copy of the SoCC, that has been prepared by the Applicant, can be inspected.

The SoCC may be inspected free of charge from 1 April 2022 on the Project Website:

If you are unable to access the Project Website, please email: thermalenquiries@sse.com or telephone: 020 7489 4830 to request a copy of the SoCC. Any details you provide to us via email or telephone will be subject to our Privacy Notice: www.sse.com/privacy-notice/. You will be offered a hard copy of the SoCC or a USB stick containing the SoCC, which will be supplied and posted to you free of charge.

Should you have any questions about the SoCC, the consultation or the Project please visit the Project Website or contact the Applicant using the above details.

SSE Slough Multifuel Limited

1 April 2022

To advertise on the Motoring pages please call Ian on

Exchange andMart

APPENDIX 3.3: STAGE 2 SECTION 48 DUTY TO CONSULT LOCAL COMMUNITY NEWSPAPER NOTICE



THE SLOUGH MULTIFUEL EXTENSION PROJECT

The Planning Act 2008 - Section 48 'Duty to publicise'

The Infrastructure Planning (Applications: Prescribed Forms and Procedure) Regulations 2008 - Regulation 4

The Infrastructure Planning (Environmental Impact Assessment) Regulations 2017 - Regulation 13

Notice of proposed application for a Development Consent Order for the Slough Multifuel Extension Project

The Application

1. Notice is hereby given that SSE Slough Multifuel Limited (the 'Applicant'), whose registered office is No.1 Forbury Place, 43 Forbury Road, Reading, RG1 3JH, is intending to submit an application (the 'Proposed Application') to the Secretary of State (the 'SoS') for Business, Energy and Industrial Strategy for a Development Consent Order ('DCO') under Section 37 'Applications for orders granting development consent' of the Planning Act 2008 (the 'PA 2008'), to authorise the construction of the Slough Multifuel Extension Project and the ongoing operation of the Consented Development (defined below) at the increased capacity of over 50 megawatts (the 'Project').

2. The Project comprises works to increase the efficiency and output of an energy from waste electricity generating station with capacity up to 50 megawatts (MW), which was originally consented in June 2017 under the Town and Country Planning Act 1990 ('TCPA') regime (planning permission refs. P/00987/024 and P/00987/025) (the 'Consented Development'), to achieve up to 60MW peak electrical output (MWe). As the electrical output would exceed 50MW the Project requires development consent (granted in the form of a DCO) pursuant to Sections 31, 14(1)(a) and 15 of the PA 2008.

The Project

3. The Project comprises land either of Edinburgh Avenue, Slough, SL1 4TU (located a grid reference 495372, 181446) (the 'Site'). The Site is located within the Slough Heat and Power site and encompasses the site of the Consented Development. All elements of the Project are within the administrative boundary of Slough Borough Council. In total the Site extends 2.8 hectares.

3.1 Plans are available within the 'Consultation Documents' (see further below) showing the extent of the Site.

3.2 The Slough Multifuel Extension Project involves the mechanical modification of the Consented Development and provision of additional systems including:

- heat exchanger bundles (internal to the existing Consented Development building envelope);
- external and internal above ground pipework and valves;
- pipe supports (external and internal);

- thermal insulation (external and internal works);
- instrumentation (internal to the existing Consented Development building envelope);
- cabling and containment (internal); and
- mechanical modifications to the steam turbine inlet control system (internal works).

3.3 The increase in efficiency and generating capacity will not require any increase in the hourly throughput of Waste Derived Fuel (WDF) or the number of approved deliveries to the facility.

3.4 The consented building structures and architecture, currently under construction, will remain unchanged.

Environmental Impact Assessment

4. The Applicant has notified the SoS in writing under Regulation 8(1)(b) of The Infrastructure Planning (Environmental Impact Assessment) Regulations 2017 (the 'EIA Regulations') that they intend to provide an Environmental Statement in respect of the Project. The Project is therefore 'EIA development' for the purposes of the EIA Regulations and an ES will form part of the Proposed Application.

5. Information so far compiled about the Project's environmental impacts is contained in a Preliminary Environmental Information ('PEI') Report and summarised in a Non-Technical Summary to the PEI Report.

Consultation Documents

6. The PEI Report and other documents relating to the Project, including plans and maps showing the nature and location of the Project (the 'Consultation Documents'), are available to download and view free of charge from the Project Website: [REDACTED] until 17 June 2022. The documents will be available under the 'Stage 2 Consultation' tab on the Project Website (link above).

7. If you are unable to access the Project Website please telephone: Freephone 0800 335 7003 and leave a message or email: thermalenquiries@sse.com and you will be offered a paper copy of the Consultation Documents free of charge (with the exception of the PEI Report which will be charged at a maximum of £100) or a USB containing the Consultation Documents free of charge. Please allow a week for receipt of the Consultation Documents.

7.1 Any details you provide to us via telephone or email will be subject to our Privacy Notice: [REDACTED]

8. Regulation 4 of The Infrastructure Planning (Applications: Prescribed Forms and Procedure) Regulations 2009 (as amended by The Infrastructure Planning (Publication and Notification of Applications etc.) (Coronavirus (Amendment) Regulations 2020) no longer requires that an applicant for development consent makes hard copy consultation documents available for inspection at an address in the vicinity of the relevant project. While the Applicant does not intend to make hard copies of the Consultation Documents available at any local public venue within the vicinity of the Site, the Consultation Documents have been published on the Project Website and paper copies and USBs of the Consultation Documents can be requested using the details provided above.

Responding to this notice

9. If you wish to respond to this notice or make comments or representations in respect of the Project, these should be sent to the Applicant. Please include your name and an address where any correspondence relating to the Project can be sent. Comments and representations may be submitted in the following ways:

Email: thermalenquiries@sse.com

Post: FREEPOST SLOUGH MULTIFUEL

Telephone: Freephone 0800 335 7003 (this is a voicemail-based service and can be called 24 hours. Please leave your name and a telephone number).

Project Website: [REDACTED]

10. Any comments received will be analysed by the Applicant and any appointed agent of the Applicant, and copies may be made available in due course to the SoS, the Planning Inspectorate and other relevant statutory authorities so that your comments can be noted. For certain parties, those who own an interest in land or are affected by the Project, the Applicant is under a statutory duty to publish names and addresses as part of its DCO application. In respect of other people, we will request that your personal details are not placed on public record and these will be held securely by the Applicant in accordance with the Data Protection Act 1998 and the General Data Protection Regulation and used solely in connection with the consultation process and subsequent DCO application and, except as noted above, will not be passed to third parties. Please refer to our Privacy Notice: [REDACTED]

11. Please note that all comments and representations must be received by the Applicants **no later than 5pm on 17 June 2022.**

12. If you would like any further information in respect of this notice or the Project, please contact the Applicant using one of the contact methods set out above.

SSE Slough Multifuel Limited

May 2022

APPENDIX 3.4: STAGE 2 SECTION 48 DUTY TO CONSULT LOCAL COMMUNITY NEWSPAPER NOTICE AS PUBLISHED



THE GAZETTE

LONDON GAZETTE

**CONTAINING ALL NOTICES PUBLISHED ONLINE ON
5 MAY 2022**

PRINTED ON 6 MAY 2022 | NUMBER 63689
PUBLISHED BY AUTHORITY | ESTABLISHED 1665

Contents

State/
Royal family/
Parliament Assemblies & Government/
Honours & Awards/
Church/8634*
Environment & infrastructure/8635*
Health & medicine/
Other Notices/8640*
Money/8641*
Companies/8642*
People/8701*
Terms & Conditions/8729*

* Containing all notices published online on 5 May 2022

ENVIRONMENT & INFRASTRUCTURE

ENVIRONMENTAL PROTECTION

SLOUGH MULTIFUEL PROJECT

THE PLANNING ACT 2008 - SECTION 48

'DUTY TO PUBLICISE'

THE INFRASTRUCTURE PLANNING (APPLICATIONS: PRESCRIBED FORMS AND PROCEDURE) REGULATIONS 2008 - REGULATION 4

THE INFRASTRUCTURE PLANNING (ENVIRONMENTAL IMPACT ASSESSMENT) REGULATIONS 2017 - REGULATION 13 NOTICE OF PROPOSED APPLICATION FOR A DEVELOPMENT CONSENT ORDER FOR THE SLOUGH MULTIFUEL EXTENSION PROJECT

The Application

1. Notice is hereby given that SSE Slough Multifuel Limited (the 'Applicant'), whose registered office is No.1 Forbury Place, 43 Forbury Road, Reading, RG1 3JH, is intending to submit an application (the 'Proposed Application') to the Secretary of State (the 'SoS') for Business, Energy and Industrial Strategy for a Development Consent Order ('DCO') under Section 37 'Applications for orders granting development consent' of the Planning Act 2008 (the 'PA 2008'), to authorise the construction of the Slough Multifuel Extension Project and the ongoing operation of the Consented Development (defined below) at the increased capacity of over 50 megawatts (the 'Project').

2. The Project comprises works to increase the efficiency and output of an energy from waste electricity generating station with capacity up to 50 megawatts (MW), which was originally consented in June 2017 under the Town and Country Planning Act 1990 ('TCPA') regime (planning permission refs. P/00987/024 and P/00987/025) (the 'Consented Development'), to achieve up to 60MW peak electrical output (MWe). As the electrical output would exceed 50MW the Project requires development consent (granted in the form of a DCO) pursuant to Sections 31, 14(1)(a) and 15 of the PA 2008.

The Project

3. The Project comprises land either of Edinburgh Avenue, Slough, SL1 4TU (located a grid reference 495372, 181446) (the 'Site'). The Site is located within the Slough Heat and Power site and encompasses the site of the Consented Development. All elements of the Project are within the administrative boundary of Slough Borough Council. In total the Site extends 2.8 hectares.

3.1 Plans are available within the 'Consultation Documents' (see further below) showing the extent of the Site.

3.2 The Slough Multifuel Extension Project involves the mechanical modification of the Consented Development and provision of additional systems including:

- heat exchanger bundles (internal to the existing Consented Development building envelope);
- external and internal above ground pipework and valves;
- pipe supports (external and internal); PRINTED VOUCHER COPY ACCOUNT 951016215 REF EC4V 6AB
- thermal insulation (external and internal works);
- instrumentation (internal to the existing Consented Development building envelope);
- cabling and containment (internal); and
- mechanical modifications to the steam turbine inlet control system (internal works).

3.3 The increase in efficiency and generating capacity will not require any increase in the hourly throughput of Waste Derived Fuel (WDF) or the number of approved deliveries to the facility.

3.4 The consented building structures and architecture, currently under construction, will remain unchanged.

Environmental Impact Assessment

4. The Applicant has notified the SoS in writing under Regulation 8(1) (b) of The Infrastructure Planning (Environmental Impact Assessment) Regulations 2017 (the 'EIA Regulations') that they intend to provide an Environmental Statement in respect of the Project. The Project is therefore 'EIA development' for the purposes of the EIA Regulations and an ES will form part of the Proposed Application.

5. Information so far compiled about the Project's environmental impacts is contained in a Preliminary Environmental Information ('PEI') Report and summarised in a Non-Technical Summary to the PEI Report.

Consultation Documents

6. The PEI Report and other documents relating to the Project, including plans and maps showing the nature and location of the Project (the 'Consultation Documents'), are available to download and view free of charge from the Project Website: www.ssethermal.com/energy-from-waste/slough-multifuel/ until 17 June 2022. The documents will be available under the 'Stage 2 Consultation' tab on the Project Website (link above).

7. If you are unable to access the Project Website please telephone: Freephone 0800 335 7003 and leave a message or email: thermalenquiries@sse.com and you will be offered a paper copy of the Consultation Documents free of charge (with the exception of the PEI Report which will be charged at a maximum of £100) or a USB containing the Consultation Documents free of charge. Please allow a week for receipt of the Consultation Documents.

7.1 Any details you provide to us via telephone or email will be subject to our Privacy Notice: <https://www.sse.com/privacy-notice>

8. Regulation 4 of The Infrastructure Planning (Applications: Prescribed Forms and Procedure) Regulations 2009 (as amended by The Infrastructure Planning (Publication and Notification of Applications etc.) (Coronavirus (Amendment) Regulations 2020) no longer requires that an applicant for development consent makes hard copy consultation documents available for inspection at an address in the vicinity of the relevant project. While the Applicant does not intend to make hard copies of the Consultation Documents available at any local public venue within the vicinity of the Site, the Consultation Documents have been published on the Project Website and paper copies and USBs of the Consultation Documents can be requested using the details provided above.

Responding to this notice

9. If you wish to respond to this notice or make comments or representations in respect of the Project, these should be sent to the Applicant. Please include your name and an address where any correspondence relating to the Project can be sent. Comments and representations may be submitted in the following ways:

Email: thermalenquiries@sse.com

Post: FREEPOST SLOUGH MULTIFUEL

Telephone: Freephone 0800 335 7003 (this is a voicemail-based service and can be called 24 hours. Please leave your name and a telephone number).

Project Website: [REDACTED]

10. Any comments received will be analysed by the Applicant and any appointed agent of the Applicant, and copies may be made available in due course to the SoS, the Planning Inspectorate and other relevant statutory authorities so that your comments can be noted. For certain parties, those who own an interest in land or are affected by the Project, the Applicant is under a statutory duty to publish names and addresses as part of its DCO application. In respect of other people, we will request that your personal details are not placed on public record and these will be held securely by the Applicant in accordance with the Data Protection Act 1998 and the General Data Protection Regulation and used solely in connection with the consultation process and subsequent DCO application and, except as noted above, will not be passed to third parties. Please refer to our Privacy Notice [REDACTED]

11. Please note that all comments and representations must be received by the Applicants no later than 5pm on 17 June 2022.

12. If you would like any further information in respect of this notice or the Project, please contact the Applicant using one of the contact methods set out above.

SSE Slough Multifuel Limited

May 2022

(4062548)

Slough & South Bucks **OBSERVER**

Reaches over 62,000 adults each month *E Telmer Oct 2021 (4 weeks in print & online)

Get the latest news, views and sport near you



CELEBRITY SPECIAL



END OF THE ROAD

CONVICTED RAPIST ON TRIAL FOR MURDER



Man accused of murdering woman found gagged in lake and a separate sex attack in Slough

Full story: Page 2

COMPETITION
Collect tokens to win £370 Steam Express tickets

WIN



A pair of first class tickets worth £370 on board The West Somerset Steam Express.

Slough & South Bucks **OBSERVER**



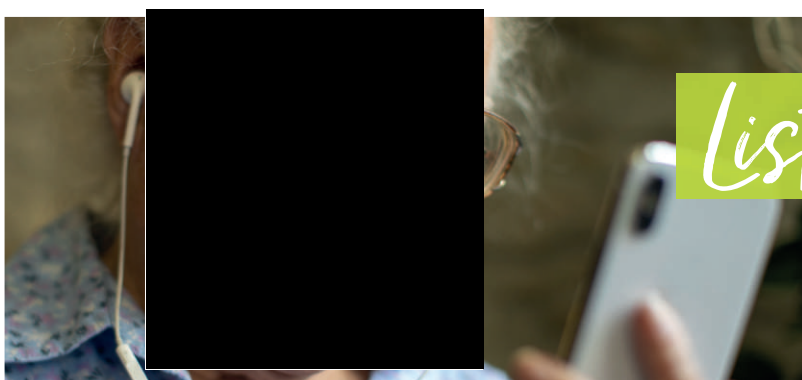
START COLLECTING YOUR TOKENS THIS WEEK

Page 14

NEWS
Contentious park & ride plan scrapped



Page 4



Listening to every story

rapinet
SOLICITORS

LOCAL LISTINGS
PUBLIC NOTICES

Planning Notices | Traffic Notices | Legal Notices | Probate Notices | Other Notices | Church and Religious Notices | Tenders and Contracts | Goods Vehicle Operator Licences

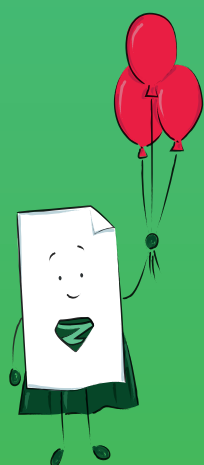
GOODS Vehicle Licensing

Goods Vehicle Operator's Licence

Danion Ltd of 142 Yeoman Meadow, Northampton, NN4 9YU to add an operating centre to keep 1 goods vehicles and 0 trailers at Dromenagh Farm, Seven Hills Road, Iver Heath Iver SLO 0PA.

Owners or occupiers of land (including buildings) near the operating centre(s) who believe that their use or enjoyment of that land would be affected, should make written representations to the Traffic Commissioner at Hillcrest House, 386 Harehills Lane, Leeds LS9 6NF, stating their reasons, within 21 days of this notice. Representors must at the same time send a copy of their representations to the applicant at the address given at the top of this notice. A Guide to Making Representations is available from the Traffic Commissioner's Office.

IF YOU'RE A PARTY PLANNER WE CAN HELP YOUR BUSINESS TAKE OFF



THE SLOUGH MULTIFUEL EXTENSION PROJECT
The Planning Act 2008 - Section 48 'Duty to publicise'
The Infrastructure Planning (Applications: Prescribed Forms and Procedure) Regulations 2008 - Regulation 4
The Infrastructure Planning (Environmental Impact Assessment) Regulations 2017 - Regulation 13

Notice of proposed application for a Development Consent Order for the Slough Multifuel Extension Project

The Application

1. Notice is hereby given that SSE Slough Multifuel Limited (the 'Applicant'), whose registered office is No.1 Forbury Place, 43 Forbury Road, Reading, RG1 3JH, is intending to submit an application (the 'Proposed Application') to the Secretary of State (the 'SoS') for Business, Energy and Industrial Strategy for a Development Consent Order ('DCO') under Section 37 'Applications for orders granting development consent' of the Planning Act 2008 (the 'PA 2008'), to authorise the construction of the Slough Multifuel Extension Project and the ongoing operation of the Consented Development (defined below) at the increased capacity of over 50 megawatts (the 'Project').

2. The Project comprises works to increase the efficiency and output of an energy from waste electricity generating station with capacity up to 50 megawatts (MW), which was originally consented in June 2017 under the Town and Country Planning Act 1990 ('TCPA') regime (planning permission refs. P/00987/024 and P/00987/025) (the 'Consented Development'), to achieve up to 60MW peak electrical output (MWE). As the electrical output would exceed 50MW the Project requires development consent (granted in the form of a DCO) pursuant to Sections 31, 14(1)(a) and 15 of the PA 2008.

The Project

3. The Project comprises land either of Edinburgh Avenue, Slough, SL1 4TU (located a grid reference 495372, 181446) (the 'Site'). The Site is located within the Slough Heat and Power site and encompasses the site of the Consented Development. All elements of the Project are within the administrative boundary of Slough Borough Council. In total the Site extends 2.8 hectares.

3.1 Plans are available within the 'Consultation Documents' (see further below) showing the extent of the Site.

3.2 The Slough Multifuel Extension Project involves the mechanical modification of the Consented Development and provision of additional systems including:

- heat exchanger bundles (internal to the existing Consented Development building envelope);
- external and internal above ground pipework and valves;
- pipe supports (external and internal);
- thermal insulation (external and internal works);
- instrumentation (internal to the existing Consented Development building envelope);
- cabling and containment (internal); and
- mechanical modifications to the steam turbine inlet control system (internal works).

3.3 The increase in efficiency and generating capacity will not require any increase in the hourly throughput of Waste Derived Fuel (WDF) or the number of approved deliveries to the facility.

3.4 The consented building structures and architecture, currently under construction, will remain unchanged.

Environmental Impact Assessment

4. The Applicant has notified the SoS in writing under Regulation 8(1)(b) of The Infrastructure Planning (Environmental Impact Assessment) Regulations 2017 (the 'EIA Regulations') that they intend to provide an Environmental Statement in respect of the Project. The Project is therefore 'EIA development' for the purposes of the EIA Regulations and an ES will form part of the Proposed Application.

5. Information so far compiled about the Project's environmental impacts is contained in a Preliminary Environmental Information ('PEI') Report and summarised in a Non-Technical Summary to the PEI Report.

Consultation Documents

6. The PEI Report and other documents relating to the Project, including plans and maps showing the nature and location of the Project (the 'Consultation Documents'), are available to download and view free of charge from the Project Website: www.ssethermal.com/energy-from-waste/slough-multifuel/ until 17 June 2022. The documents will be available under the 'Stage 2 Consultation' tab on the Project Website (link above).

7. If you are unable to access the Project Website please telephone: Freephone 0800 335 7003 and leave a message or email: thermalenquiries@sse.com and you will be offered a paper copy of the Consultation Documents free of charge (with the exception of the PEI Report which will be charged at a maximum of £100) or a USB containing the Consultation Documents free of charge. Please allow a week for receipt of the Consultation Documents.

7.1 Any details you provide to us via telephone or email will be subject to our Privacy Notice.

8. Regulation 4 of The Infrastructure Planning (Applications: Prescribed Forms and Procedure) Regulations 2009 (as amended by The Infrastructure Planning (Publication and Notification of Applications etc.) (Coronavirus (Amendment) Regulations 2020) no longer requires that an applicant for development consent makes hard copy consultation documents available for inspection at an address in the vicinity of the relevant project. While the Applicant does not intend to make hard copies of the Consultation Documents available at any local public venue within the vicinity of the Site, the Consultation Documents have been published on the Project Website and paper copies and USBs of the Consultation Documents can be requested using the details provided above.

Responding to this notice

9. If you wish to respond to this notice or make comments or representations in respect of the Project, these should be sent to the Applicant. Please include your name and an address where any correspondence relating to the Project can be sent. Comments and representations may be submitted in the following ways:

Email: thermalenquiries@sse.com

Post: FREEPOST SLOUGH MULTIFUEL

Telephone: Freephone 0800 335 7003 (this is a voicemail-based service and can be called 24 hours. Please leave your name and a telephone number).

Project Website

10. Any comments received will be analysed by the Applicant and any appointed agent of the Applicant, and copies may be made available in due course to the SoS, the Planning Inspectorate and other relevant statutory authorities so that your comments can be noted. For certain parties, those who own an interest in land or are affected by the Project, the Applicant is under a statutory duty to publish names and addresses as part of its DCO application. In respect of other people, we will request that your personal details are not placed on public record and these will be held securely by the Applicant in accordance with the Data Protection Act 1998 and the General Data Protection Regulation and used solely in connection with the consultation process and subsequent DCO application and, except as noted above, will not be passed to third parties. Please refer to our Privacy Notice:

11. Please note that all comments and representations must be received by the Applicants no later than 5pm on 17 June 2022.

12. If you would like any further information in respect of this notice or the Project, please contact the Applicant using one of the contact methods set out above.

SSE Slough Multifuel Limited
May 2022

PLANNING

BUCKINGHAMSHIRE COUNCIL

The Council has made Buckinghamshire Council (Chestnut Road, Beaconsfield) (Temporary Prohibition of Through Traffic) Order, 2022 which will temporarily prohibit any vehicle from proceeding, except for access, in Chestnut Road for 16 metres. Alternative route: Cherry Tree Road, North Drive, Wycombe End, Burgess Wood Road South and vice versa. The closure is required whilst a water connection takes place commencing on 09 May 2022 between 08:00 and 17:00. The proposed Order will come into operation on 09 May 2022, as signed, with maximum 18 months duration. Dated 06 May 2022

The Council has made Buckinghamshire Council (Lake End Road, Burnham in the Parish of Dorney CP) (Temporary Prohibition of Through Traffic) Order, 2022 which will temporarily prohibit any vehicle from proceeding, except for access, in Lake End Road for approximately 678m. Alternative route: Village Road, Common Road, Eton Wick Road, Keates Lane, Slough Road, Royal Windsor Way, Windsor Road, Chalvey Road East, Ledgers Road, Montem Lane, Bath Road, Lake End Road and vice versa. The closure is required whilst installation of permanent bridge joints on new structure over M4 works take place commencing on 9 May 2022. Full road closure from 9-14 May from 09:00-06:00 and then from 16-21 May for the start and end times. 24-hour lights will be present in between. The proposed Order will come into operation on 9 May 2022, as signed, with maximum 18 months duration. Dated 6 May 2022

The Council has made Buckinghamshire Council (Taplow Road, Burnham in the Parish of Burnham CP) (Temporary Prohibition of Through Traffic) Order, 2022 which will temporarily prohibit any vehicle from proceeding, except for access, in Taplow Road for approximately 65m. Alternative route: Taplow Road, Lent Rise Road, Bath Road, Hitcham Road and vice versa. The closure is required whilst Network Rail signage replacement and bridge repair works take place commencing on 23 May 2022. Road will only be closed between 22:00-06:00, road open at all other times. The proposed Order will come into operation on 23 May 2022, as signed, with maximum 18 months duration. Dated 6 May 2022

The Council has made Buckinghamshire Council (Hitcham Lane, Taplow in the Parish of Taplow CP) (Temporary Prohibition of Through Traffic) Order, 2022 which will temporarily prohibit any vehicle from proceeding, except for access, in Hitcham Lane for approximately 60m. Alternative route: Hitcham Road, Boundary Road, Hill Farm Road, Hitcham Lane and vice versa. The closure is required whilst Thames Water new connection works take place commencing on 16 May 2022. Road will remain closed for the duration of the works. The proposed Order will come into operation on 16 May 2022, as signed, with maximum 18 months duration. Dated 6 May 2022

The Council has made Buckinghamshire Council (Howards Thicket, Gerrards Cross) (Temporary Prohibition of Through Traffic) Order, 2022 which will temporarily prohibit any vehicle from proceeding, except for access, in Howards Thicket for 84 metres. Alternative route: Howards Thicket, Fulmer Drive, Howards Wood Drive and vice versa. The closure is required whilst New water connection. Road will be closed during the hours of 08:00-18:00. Road will be open all other hours. take place commencing on 12 May 2022 between 08:00 and 18:00. The proposed Order will come into operation on 12 May 2022, as signed, with maximum 18 months duration. Dated 06 May 2022

The Council has made Buckinghamshire Council (Hitcham Road, Burnham) (Temporary Prohibition of Through Traffic) Order, 2022 which will temporarily prohibit any vehicle from proceeding, except for access, in Hitcham Road for 67 metres. Alternative route: Institute Road, Station Road, Bath Road, Hitcham Road and vice versa. The closure is required whilst repair works to the rail bridge and approaches commencing on 16 May 2022 between 21:00 and 05:00. The proposed Order will come into operation on 16 May 2022, as signed, with maximum 18 months duration. Dated 06 May 2022

The Council has made Buckinghamshire Council (Marsham Lane, Gerrards Cross) (Temporary Prohibition of Through Traffic) Order, 2022 which will temporarily prohibit any vehicle from proceeding, except for access, in Marsham Lane for 72 metres. Alternative route: Oak End Way, Packhorse Road, Station Road and vice versa. The closure is required whilst cabling works on junction box take place commencing on 16 May 2022 between 09:00 and 15:00. The proposed Order will come into operation on 16 May 2022, as signed, with maximum 18 months duration. Dated 06 May 2022

The Council intends to make Buckinghamshire Council (North Orbital Road, Denham) (Temporary Prohibition of Through Traffic) Order, 2022 which will temporarily prohibit any vehicle from proceeding, except for access, in North Orbital Road for 21 metres. Alternative route: North Orbital Road, Tilehouse Way, Denham Green Lane and vice versa. The closure is required whilst Electrical works for a new supply. take place commencing on 16 May 2022 between 07:00 and 17:00. The proposed Order will come into operation on 16 May 2022, as signed, with maximum 18 months duration. Dated 06 May 2022

The Council intends to make Buckinghamshire Council (Village Road, Denham) (Temporary Prohibition of Through Traffic) Order, 2022 which will temporarily prohibit any vehicle from proceeding, except for access, in Village Road for 54 metres. Alternative route: Village Road, Cheapside Lane, Oxford Road, Old Mill Road, Denham Roundabout, A40 J M40/a412/a4020 Roundabout and vice versa. The closure is required whilst a Gas Connection takes place commencing on 16 May 2022 between 08:00 and 16:00. The proposed Order will come into operation on 16 May 2022, as signed, with maximum 18 months duration. Dated 06 May 2022

Let us get your leaky roof fixed.

Visit our local website and click on 'Local Listings'.

LOCALIQ

Exchange andMart

Slough & South Bucks **OBSERVER**

Reaches over 62,000 adults each month *E Telmer Oct 2021 (4 weeks in print & online)

Get the latest news, views and sport near you

TYING THE KNOT

RESULTS ARE IN



TEENAGER FACING MURDER TRIAL

18 year old stabbed to death in the street as young suspects arrested and boy, 15, in court

Page 2



NEWS

Housing group slammed as mum 'lives in squalor'



Page 4

NEWS

Retail giant confirms town branch closure



Page 4

'Shambles' as traffic lights out AGAIN at problem junction

Story Page 5

**Will, Probate,
Power of Attorney,
Trust & Tax and
Elderly Client Services**



LOCALiSTINGS PUBLIC NOTICES

Planning Notices | Traffic Notices | Legal Notices | Probate Notices | Other Notices
Church and Religious Notices | Tenders and Contracts | Goods Vehicle Operator Licences

PLANNING

BUCKINGHAMSHIRE COUNCIL

The Council has made Buckinghamshire Council (North Orbital Road, Denham) (Temporary Prohibition of Through Traffic) Order, 2022 which will temporarily prohibit any vehicle from proceeding, except for access, in North Orbital Road for 21 metres. Alternative route: North Orbital Road, Tilehouse Way, Denham Green Lane and vice versa. The closure is required whilst Electrical works for a new supply. take place commencing on 16 May 2022 between 07:00 and 17:00. The proposed Order will come into operation on 16 May 2022, as signed, with maximum 18 months duration.

Dated 13 May 2022

The Council has made Buckinghamshire Council (Village Road, Denham) (Temporary Prohibition of Through Traffic) Order, 2022 which will temporarily prohibit any vehicle from proceeding, except for access, in Village Road for 54 metres. Alternative route: Village Road, Cheapside Lane, Oxford Road, Old Mill Road, Denham Roundabout, A40 J M40/a412/a4020 Roundabout and vice versa. The closure is required whilst a Gas Connection takes place commencing on 16 May 2022 between 08:00 and 16:00. The proposed Order will come into operation on 16 May 2022, as signed, with maximum 18 months duration.

Dated 13 May 2022

The Council intends to make Buckinghamshire Council (Field Road, Denham) (Temporary Prohibition of Through Traffic) Order, 2022 which will temporarily prohibit any vehicle from proceeding, except for access, in Field Road for 291 metres. Alternative route: Field Road, Blacksmiths Lane, Hollybush Lane, and vice versa. The closure is required whilst a pole replacement takes place commencing on 24 May 2022 between 08:00 and 18:00. The proposed Order will come into operation on 24 May 2022, as signed, with maximum 18 months duration.

Dated 13 May 2022

The Council intends to make Buckinghamshire Council (Hedgerley Lane, Gerrards Cross) (Temporary Prohibition of Through Traffic) Order, 2022 which will temporarily prohibit any vehicle from proceeding, except for access, in Hedgerley Lane for 330 metres. Alternative route: Village Lane, Hedgerley Hill, Collum Green Road, Windsor Road and vice versa. The closure is required whilst duct is being laid in the verge, taking place commencing on 25 May 2022 between 09:00 and 16:00. The proposed Order will come into operation on 25 May 2022, as signed, with maximum 18 months duration.

Dated 13 May 2022

ALCOHOL & Licensing

NOTICE OF APPLICATION FOR A PREMISE LICENCE UNDER SECTION 17 OF THE LICENSING ACT 2003

Narinder Dhillon applied to Slough Borough Council on 05/04/22 for a licence to use the premises at Premier Brunel Way, Slough Bus Station, Brunel Way, Slough, Berks, SL1 1XN for the sale by retail of alcohol during the hours - 11:00 - 20:00 Monday - Friday and 11:00 - 16:00 Saturday - Sunday. Full details of which can be inspected on the application. The licensing register can be inspected at the address noted below during normal business hours. Any representations by an interested party or responsible authority regarding this application can be made to: Slough Borough Council, Licensing Team, Observatory House, 25 Windsor Road, Slough, SL1 2EL, licensing@slough.gov.uk

Any representations must be made in writing by 02.06.2022 clearly stating the grounds upon which the representation is made relevant to the Licensing Act. It is an offence knowingly or recklessly to make a false statement in connection with an application and is subject to a maximum fine of £5000 on summary conviction.

FIND YOUR
BEST
PROSPECTS
WITH TARGETED
LEAFLETS



LOCALiQ

Your digital marketing expert.



THE SLOUGH MULTIFUEL EXTENSION PROJECT The Planning Act 2008 - Section 48 'Duty to publicise' The Infrastructure Planning (Applications: Prescribed Forms and Procedure) Regulations 2008 - Regulation 4 The Infrastructure Planning (Environmental Impact Assessment) Regulations 2017 - Regulation 13

Notice of proposed application for a Development Consent Order for the Slough Multifuel Extension Project

The Application

1. Notice is hereby given that SSE Slough Multifuel Limited (the 'Applicant'), whose registered office is No.1 Forbury Place, 43 Forbury Road, Reading, RG1 3JH, is intending to submit an application (the 'Proposed Application') to the Secretary of State (the 'SoS') for Business, Energy and Industrial Strategy for a Development Consent Order ('DCO') under Section 37 'Applications for orders granting development consent' of the Planning Act 2008 (the 'PA 2008'), to authorise the construction of the Slough Multifuel Extension Project and the ongoing operation of the Consented Development (defined below) at the increased capacity of over 50 megawatts (the 'Project').

2. The Project comprises works to increase the efficiency and output of an energy from waste electricity generating station with capacity up to 50 megawatts (MW), which was originally consented in June 2017 under the Town and Country Planning Act 1990 ('TCPA') regime (planning permission refs. P/00987/024 and P/00987/025) (the 'Consented Development'), to achieve up to 60MW peak electrical output (MWe). As the electrical output would exceed 50MW the Project requires development consent (granted in the form of a DCO) pursuant to Sections 31, 14(1)(a) and 15 of the PA 2008.

The Project

3. The Project comprises land either of Edinburgh Avenue, Slough, SL1 4TU (located a grid reference 495372, 181446) (the 'Site'). The Site is located within the Slough Heat and Power site and encompasses the site of the Consented Development. All elements of the Project are within the administrative boundary of Slough Borough Council. In total the Site extends 2.8 hectares.

3.1 Plans are available within the 'Consultation Documents' (see further below) showing the extent of the Site.

3.2 The Slough Multifuel Extension Project involves the mechanical modification of the Consented Development and provision of additional systems including:

- heat exchanger bundles (internal to the existing Consented Development building envelope);
- external and internal above ground pipework and valves;
- pipe supports (external and internal);
- thermal insulation (external and internal works);
- instrumentation (internal to the existing Consented Development building envelope);
- cabling and containment (internal); and
- mechanical modifications to the steam turbine inlet control system (internal works).

3.3 The increase in efficiency and generating capacity will not require any increase in the hourly throughput of Waste Derived Fuel (WDF) or the number of approved deliveries to the facility.

3.4 The consented building structures and architecture, currently under construction, will remain unchanged.

Environmental Impact Assessment

4. The Applicant has notified the SoS in writing under Regulation 8(1)(b) of The Infrastructure Planning (Environmental Impact Assessment) Regulations 2017 (the 'EIA Regulations') that they intend to provide an Environmental Statement in respect of the Project. The Project is therefore 'EIA development' for the purposes of the EIA Regulations and an ES will form part of the Proposed Application.

5. Information so far compiled about the Project's environmental impacts is contained in a Preliminary Environmental Information ('PEI') Report and summarised in a Non-Technical Summary to the PEI Report.

Consultation Documents

6. The PEI Report and other documents relating to the Project, including plans and maps showing the nature and location of the Project (the 'Consultation Documents'), are available to download and view free of charge from the Project Website: [redacted] until 17 June 2022.

7. If you are unable to access the Project Website please telephone: Freephone 0800 335 7003 and leave a message or email: thermalenquiries@sse.com and you will be offered a paper copy of the Consultation Documents free of charge (with the exception of the PEI Report which will be charged at a maximum of £100) or a USB containing the Consultation Documents free of charge. Please allow a week for receipt of the Consultation Documents.

7.1 Any details you provide to us via telephone or email will be subject to our Privacy Notice: [redacted]

8. Regulation 4 of The Infrastructure Planning (Applications: Prescribed Forms and Procedure) Regulations 2009 (as amended by The Infrastructure Planning (Publication and Notification of Applications etc.) (Coronavirus (Amendment) Regulations 2020) no longer requires that an applicant for development consent makes hard copy consultation documents available for inspection at an address in the vicinity of the relevant project. While the Applicant does not intend to make hard copies of the Consultation Documents available at any local public venue within the vicinity of the Site, the Consultation Documents have been published on the Project Website and paper copies and USBs of the Consultation Documents can be requested using the details provided above.

Responding to this notice

9. If you wish to respond to this notice or make comments or representations in respect of the Project, these should be sent to the Applicant. Please include your name and an address where any correspondence relating to the Project can be sent. Comments and representations may be submitted in the following ways:

Email: thermalenquiries@sse.com

Post: FREEPOST SLOUGH MULTIFUEL

Telephone: Freephone 0800 335 7003 (this is a voicemail-based service and can be called 24 hours. Please leave your name and a telephone number).

Project Website: [redacted]

10. Any comments received will be analysed by the Applicant and any appointed agent of the Applicant, and copies may be made available in due course to the SoS, the Planning Inspectorate and other relevant statutory authorities so that your comments can be noted. For certain parties, those who own an interest in land or are affected by the Project, the Applicant is under a statutory duty to publish names and addresses as part of its DCO application. In respect of other people, we will request that your personal details are not placed on public record and these will be held securely by the Applicant in accordance with the Data Protection Act 1998 and the General Data Protection Regulation and used solely in connection with the consultation process and subsequent DCO application and, except as noted above, will not be passed to third parties. Please refer to our Privacy Notice: [redacted]

11. Please note that all comments and representations must be received by the Applicants **no later than 5pm on 17 June 2022.**

12. If you would like any further information in respect of this notice or the Project, please contact the Applicant using one of the contact methods set out above.

SSE Slough Multifuel Limited
May 2022

Houses & Flats To Let

LUXURY FULLY FURNISHED STUDIO

In Loudwater.

Cutlery, crockery, all bills, internet included. Non smoker

£880pcm

LOCALiQ



Stay local,
support
independent
traders.

LOCALiQ

Our LOVE Local business directory has been rebranded to reflect and celebrate our local SMEs, who remain at the heart of what we do.

The COVID pandemic has accelerated the need for all businesses to have a digital presence and our packages will meet that basic business need.

APPENDIX 3.5: STAGE 2 SECTION 48 SITE NOTICE



THE SLOUGH MULTIFUEL EXTENSION PROJECT

The Planning Act 2008 - Section 48 'Duty to publicise'

The Infrastructure Planning (Applications: Prescribed Forms and Procedure) Regulations 2008 - Regulation 4

The Infrastructure Planning (Environmental Impact Assessment) Regulations 2017 - Regulation 13

Notice of proposed application for a Development Consent Order for the Slough Multifuel Extension Project

The Application

1. Notice is hereby given that SSE Slough Multifuel Limited (the 'Applicant'), whose registered office is No.1 Forbury Place, 43 Forbury Road, Reading, RG1 3JH, is intending to submit an application (the 'Proposed Application') to the Secretary of State (the 'SoS') for Business, Energy and Industrial Strategy for a Development Consent Order ('DCO') under Section 37 'Applications for orders granting development consent' of the Planning Act 2008 (the 'PA 2008'), to authorise the construction of the Slough Multifuel Extension Project and the ongoing operation of the Consented Development (defined below) at the increased capacity of over 50 megawatts (the 'Project').

2. The Project comprises works to increase the efficiency and output of an energy from waste electricity generating station with capacity up to 50 megawatts (MW), which was originally consented in June 2017 under the Town and Country Planning Act 1990 ('TCPA') regime (planning permission refs. P/00987/024 and P/00987/025) (the 'Consented Development'), to achieve up to 60MW peak electrical output (MWe). As the electrical output would exceed 50MW the Project requires development consent (granted in the form of a DCO) pursuant to Sections 31, 14(1)(a) and 15 of the PA 2008.

The Project

3. The Project comprises land either of Edinburgh Avenue, Slough, SL1 4TU (located a grid reference 495372, 181446) (the 'Site'). The Site is located within the Slough Heat and Power site and encompasses the site of the Consented Development. All elements of the Project are within the administrative boundary of Slough Borough Council. In total the Site extends 2.8 hectares.

3.1 Plans are available within the 'Consultation Documents' (see further below) showing the extent of the Site.

3.2 The Slough Multifuel Extension Project involves the mechanical modification of the Consented Development and provision of additional systems including:

- heat exchanger bundles (internal to the existing Consented Development building envelope);
- external and internal above ground pipework and valves;
- pipe supports (external and internal);

- thermal insulation (external and internal works);
- instrumentation (internal to the existing Consented Development building envelope);
- cabling and containment (internal); and
- mechanical modifications to the steam turbine inlet control system (internal works).

3.3 The increase in efficiency and generating capacity will not require any increase in the hourly throughput of Waste Derived Fuel (WDF) or the number of approved deliveries to the facility.

3.4 The consented building structures and architecture, currently under construction, will remain unchanged.

Environmental Impact Assessment

4. The Applicant has notified the SoS in writing under Regulation 8(1)(b) of The Infrastructure Planning (Environmental Impact Assessment) Regulations 2017 (the 'EIA Regulations') that they intend to provide an Environmental Statement in respect of the Project. The Project is therefore 'EIA development' for the purposes of the EIA Regulations and an ES will form part of the Proposed Application.

5. Information so far compiled about the Project's environmental impacts is contained in a Preliminary Environmental Information ('PEI') Report and summarised in a Non-Technical Summary to the PEI Report.

Consultation Documents

6. The PEI Report and other documents relating to the Project, including plans and maps showing the nature and location of the Project (the 'Consultation Documents'), are available to download and view free of charge from the Project Website: [REDACTED] until 17 June 2022. The documents will be available under the 'Stage 2 Consultation' tab on the Project Website (link above).

7. If you are unable to access the Project Website please telephone: Freephone 0800 335 7003 and leave a message or email: thermalenquiries@sse.com and you will be offered a paper copy of the Consultation Documents free of charge (with the exception of the PEI Report which will be charged at a maximum of £100) or a USB containing the Consultation Documents free of charge. Please allow a week for receipt of the Consultation Documents.

7.1 Any details you provide to us via telephone or email will be subject to our Privacy Notice: [REDACTED]

8. Regulation 4 of The Infrastructure Planning (Applications: Prescribed Forms and Procedure) Regulations 2009 (as amended by The Infrastructure Planning (Publication and Notification of Applications etc.) (Coronavirus (Amendment) Regulations 2020) no longer requires that an applicant for development consent makes hard copy consultation documents available for inspection at an address in the vicinity of the relevant project. While the Applicant does not intend to make hard copies of the Consultation Documents available at any local public venue within the vicinity of the Site, the Consultation Documents have been published on the Project Website and paper copies and USBs of the Consultation Documents can be requested using the details provided above.

Responding to this notice

9. If you wish to respond to this notice or make comments or representations in respect of the Project, these should be sent to the Applicant. Please include your name and an address where any correspondence relating to the Project can be sent. Comments and representations may be submitted in the following ways:

Email: thermalenquiries@sse.com

Post: FREEPOST SLOUGH MULTIFUEL

Telephone: Freephone 0800 335 7003 (this is a voicemail-based service and can be called 24 hours. Please leave your name and a telephone number).

Project Website: [REDACTED]

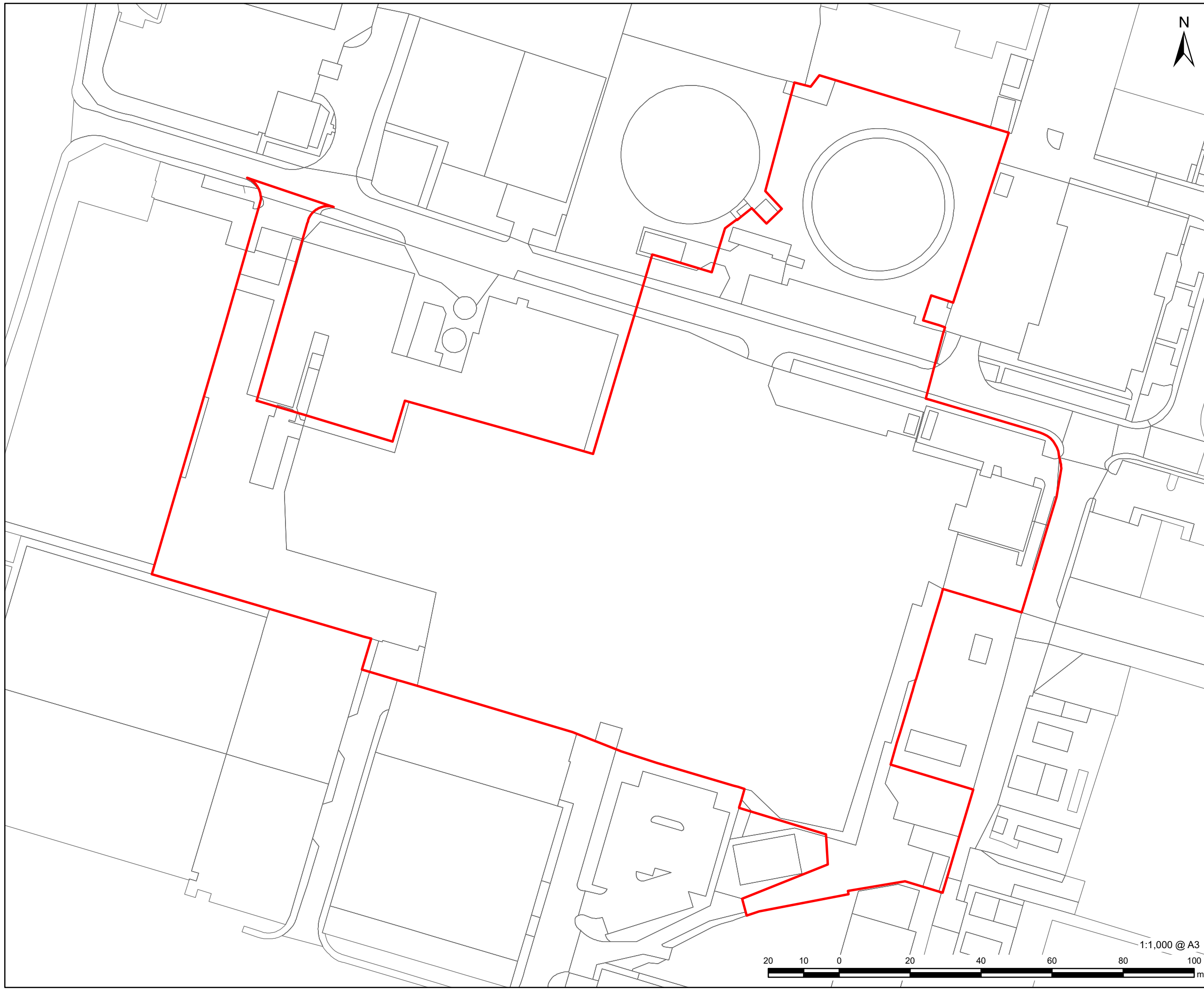
10. Any comments received will be analysed by the Applicant and any appointed agent of the Applicant, and copies may be made available in due course to the SoS, the Planning Inspectorate and other relevant statutory authorities so that your comments can be noted. For certain parties, those who own an interest in land or are affected by the Project, the Applicant is under a statutory duty to publish names and addresses as part of its DCO application. In respect of other people, we will request that your personal details are not placed on public record and these will be held securely by the Applicant in accordance with the Data Protection Act 1998 and the General Data Protection Regulation and used solely in connection with the consultation process and subsequent DCO application and, except as noted above, will not be passed to third parties. Please refer to our Privacy Notice: [REDACTED]

11. Please note that all comments and representations must be received by the Applicants **no later than 5pm on 17 June 2022**.

12. If you would like any further information in respect of this notice or the Project, please contact the Applicant using one of the contact methods set out above.

SSE Slough Multifuel Limited

May 2022



SSE Slough Multifuel

3rd Floor, Portwall Place
Portwall Lane
Bristol
BS1 6NA
aecom.com

Proposed Project Site Boundary

Reproduced from Ordnance Survey digital map data © Crown copyright [2021]. All rights reserved. Licence number 0100031673.

FOR INFORMATION

60662168

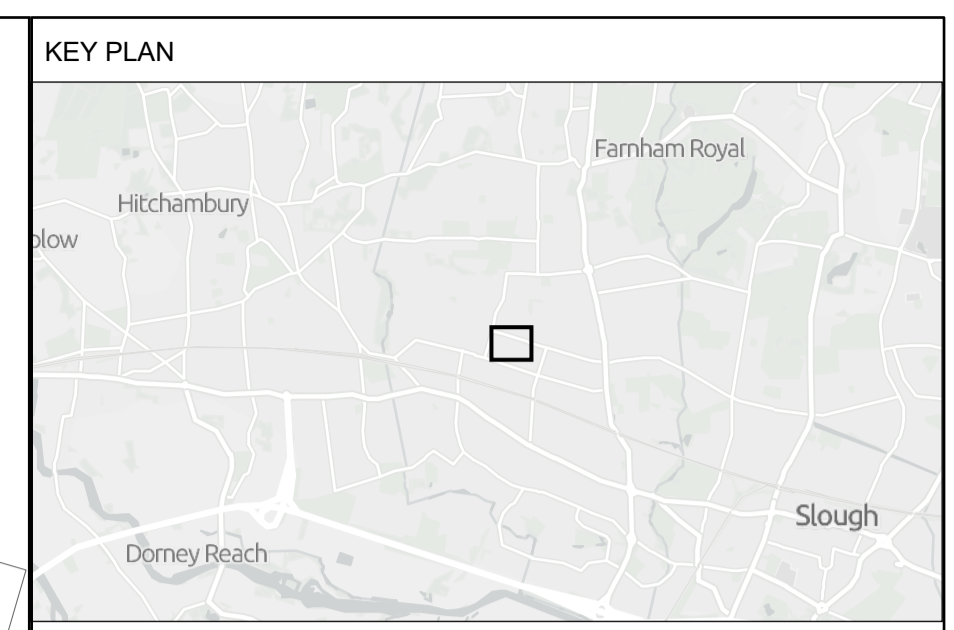
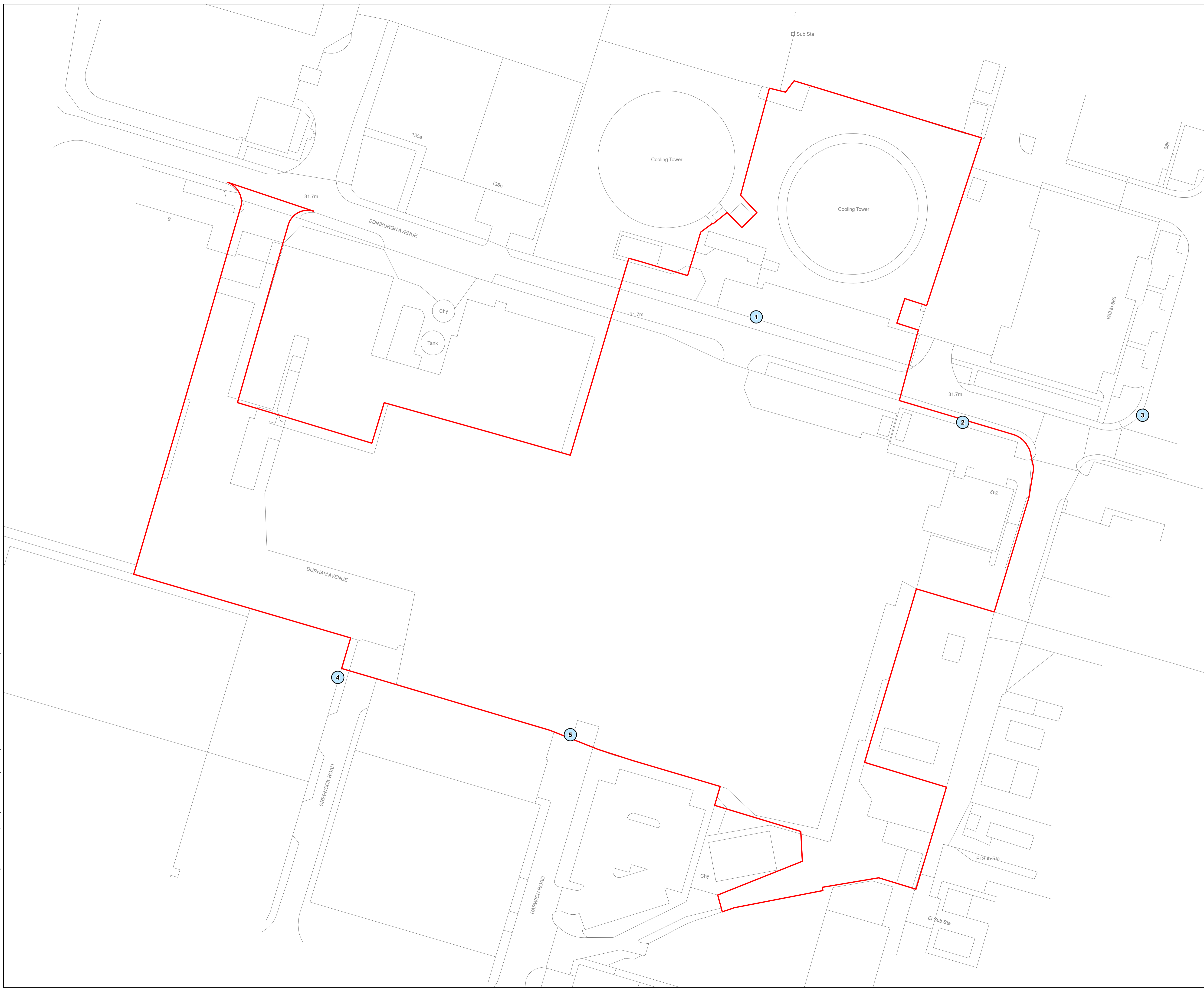
Proposed Project Site Boundary

Figure 2.1

This drawing has been prepared for the use of AECOM's client. It may not be used, modified, reproduced or relied upon by third parties, except as agreed by AECOM or as required by law. AECOM accepts no responsibility, and denies any liability whatsoever, to any party that uses or relies on this drawing without AECOM's express written consent. Do not scale this document. All measurements must be obtained from the stated dimensions.

APPENDIX 3.6: STAGE 2 SECTION 48 NOTICE SITE MAP AND PHOTOS

Plot Date: 12 September 2022 14:48
File Name: C:\Users\AdamH\OneDrive - Arcant Management Ltd\Desktop\Slough Multifuel LOP Update - Sep 22\ARD-SLHM-F-S56-Notice_Location.aprx



Key
Order Limits

© Crown copyright and database rights 2022 Ordnance Survey 100030649. You are permitted to use this data solely to enable you to respond to, or interact with, the organisation that provided you with the data. You are not permitted to copy, sub-licence, distribute or sell any of this data to third parties in any form.

GB Light Grey: Contains OS data © Crown Copyright and database right 2022
Contains data from OS Zoomstack



Client
SLOUGH MULTIFUEL

Project
SECTION 42 NOTICE LOCATIONS

Status: **FOR INFORMATION** Revision: 001
Date: 12/09/2022

Scale: 1:500 @ A1 Spatial Reference System: British National Grid

0 25 50 Metres
Drawn By: A.HANKINSON Checked By: J.WITHINGTON Approved By: L.HARTIGAN

Drawing reference: ARD-AEC-SM-S42-NOTICE-LOCATION-001
This document is not to be used in whole or in part other than for the intended purpose and project for which it was prepared and provided.

Slough Multifuel – Section 42 Notice Locations and Photos

Notice Location: 1

Week 1 - ATT9_Photo1:



Week 2 - ATT29_Photo 2:



Week 3 - ATT49_Photo 3:



Week 4 - ATT69_Photo 4:



Week 5 – ATT89_Photo 5:

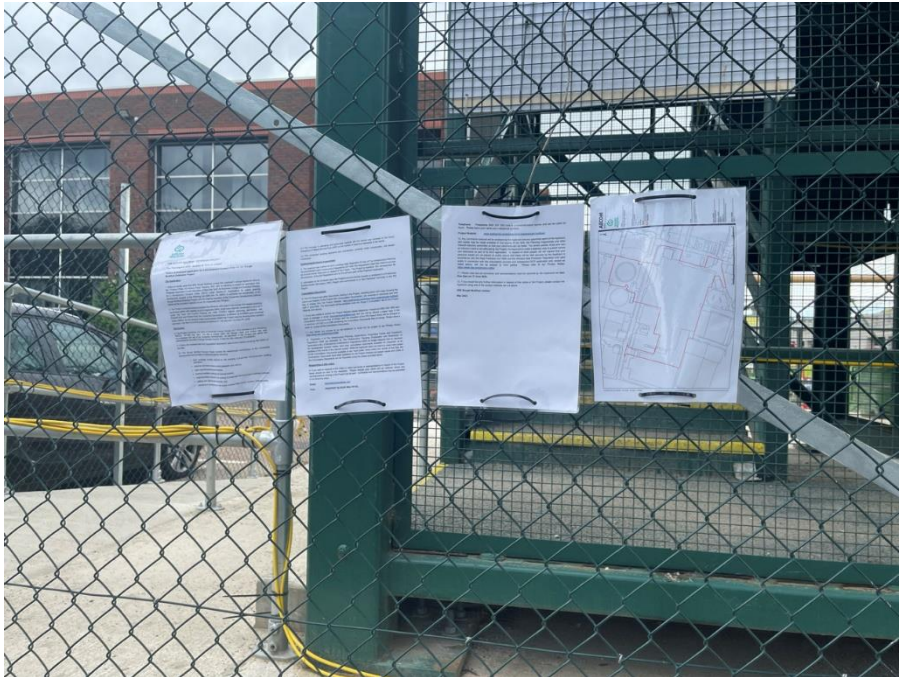


Week 6 – ATT107_Photo 6:

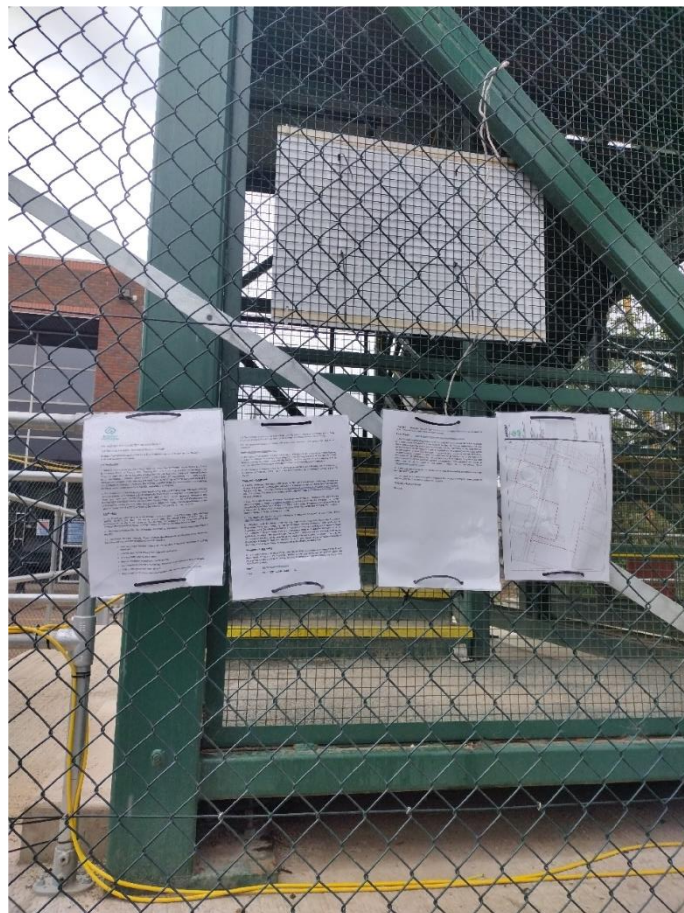


Notice Location: 2

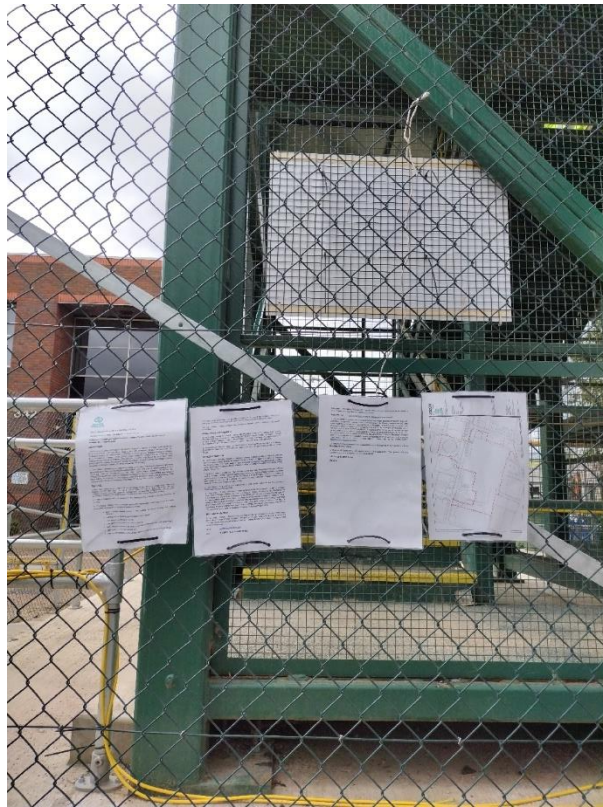
Week 1 – ATT8_Photo 1:



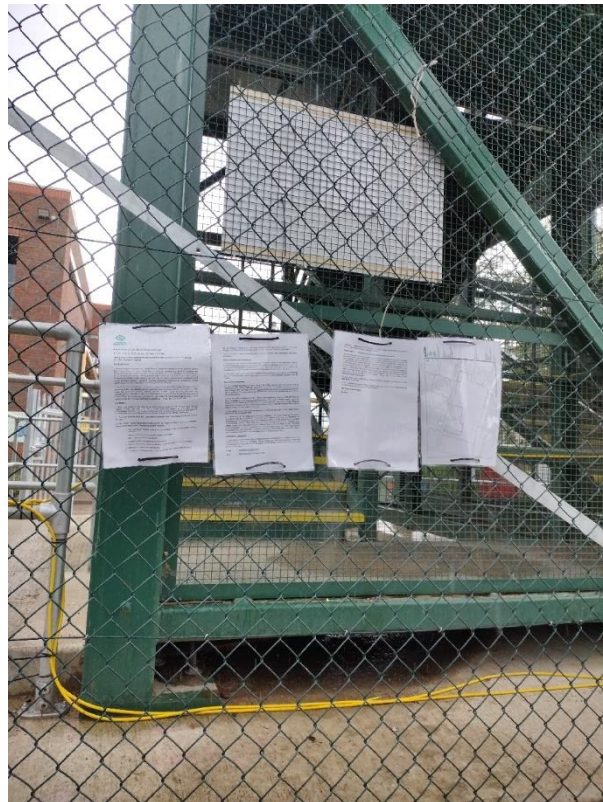
Week 2 – ATT28_Photo 2:



Week 3 – ATT48_Photo 3:



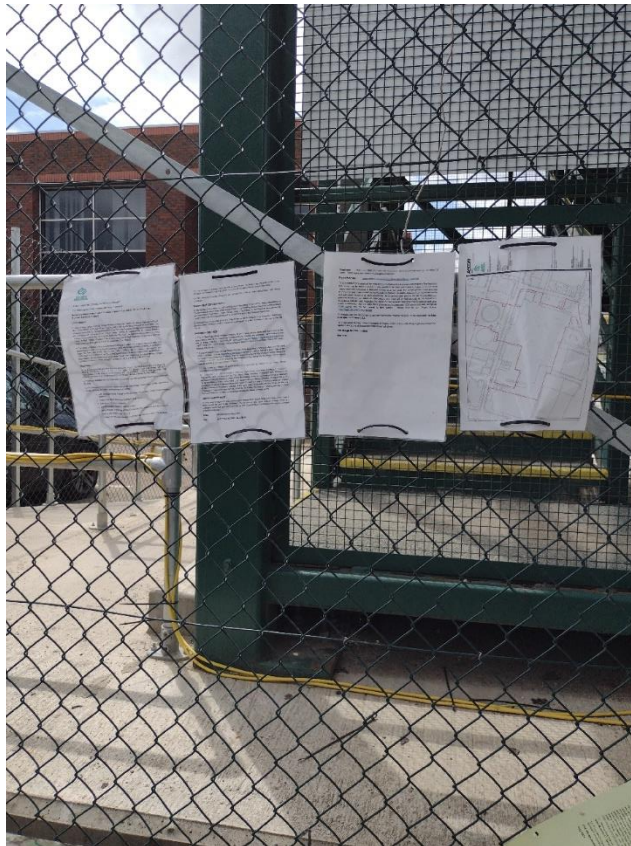
Week 4 – ATT68_Photo 4:



Week 5 – ATT88_Photo 5:

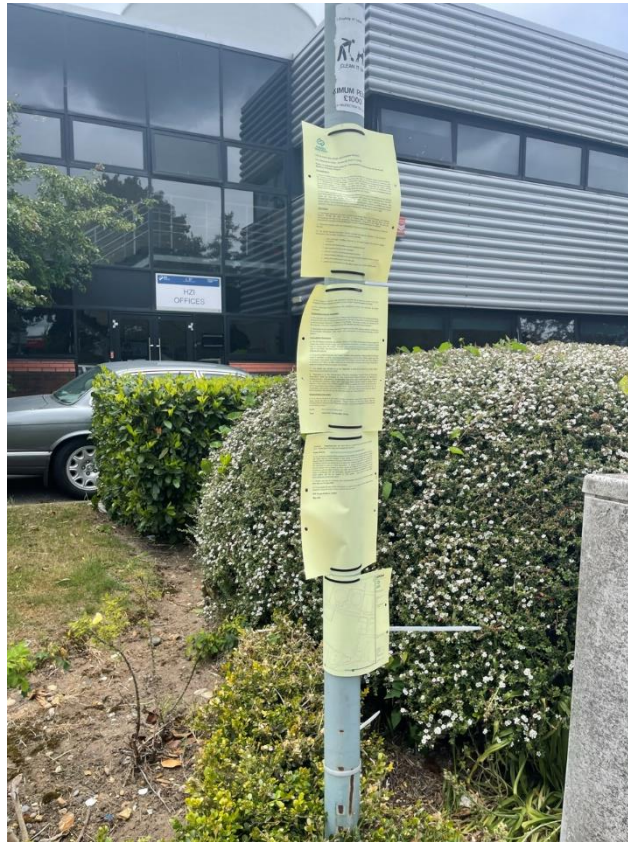


Week 6 – ATT106_Photo 6:



Notice Location: 3

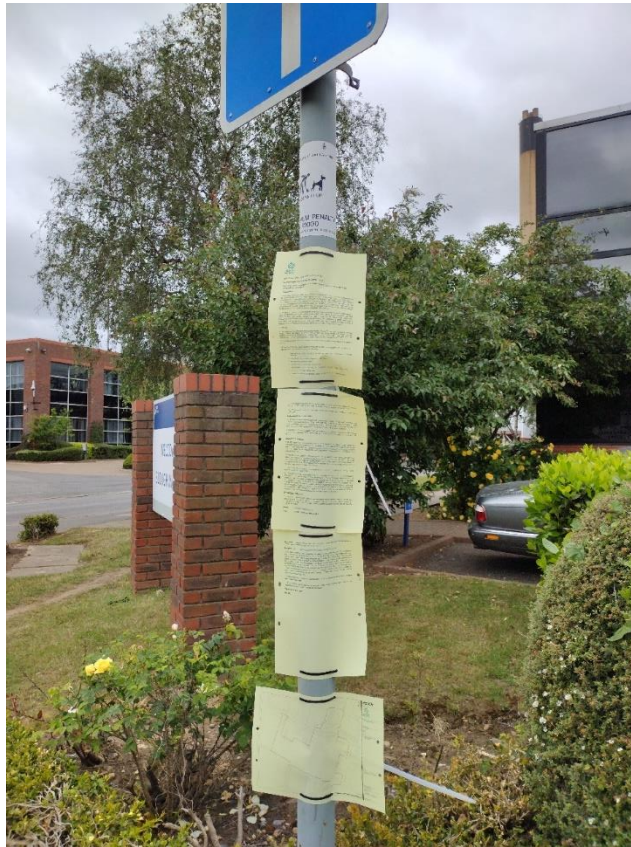
Week 1 – ATT7_Photo 1:



Week 2 – ATT27_Photo 2:



Week 3 – ATT47_Photo 3:



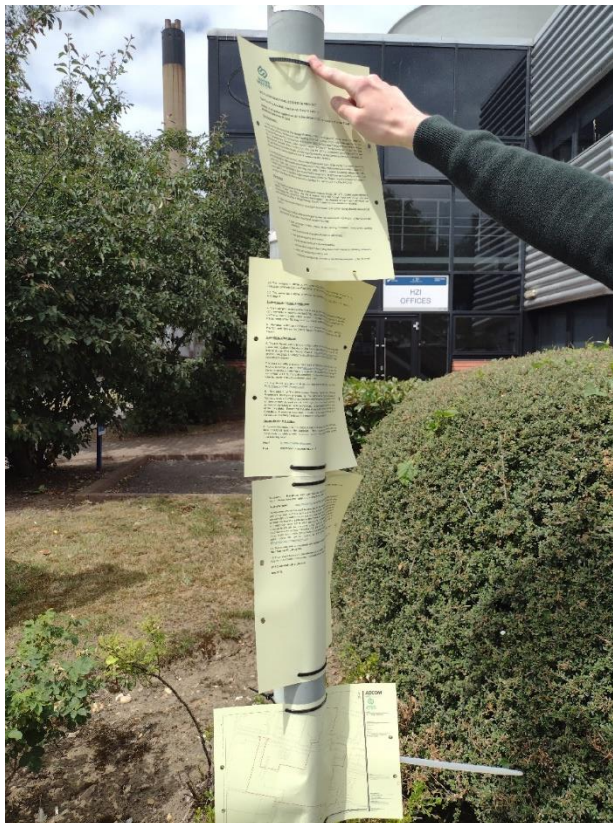
Week 4 – ATT67_Photo 4:



Week 5 – ATT87_Photo 5:

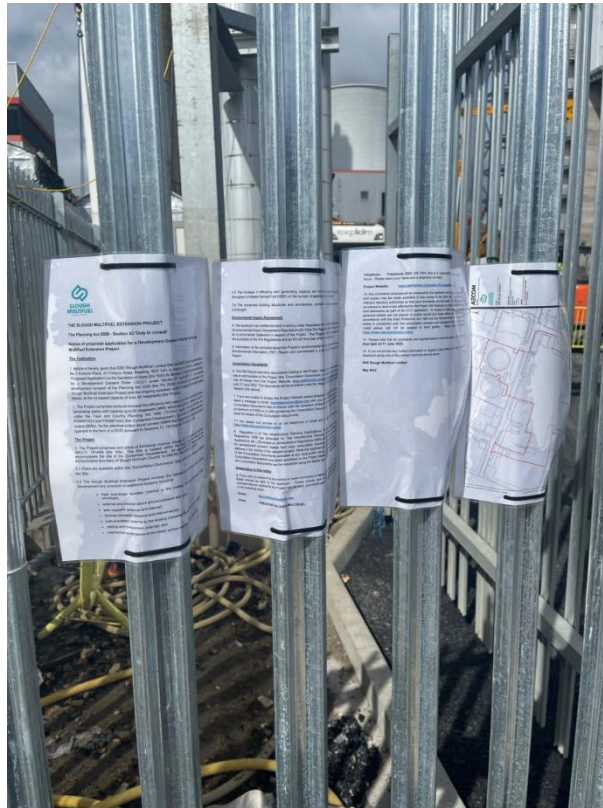


Week 6 – ATT105_Photo 6:



Notice Location: 4

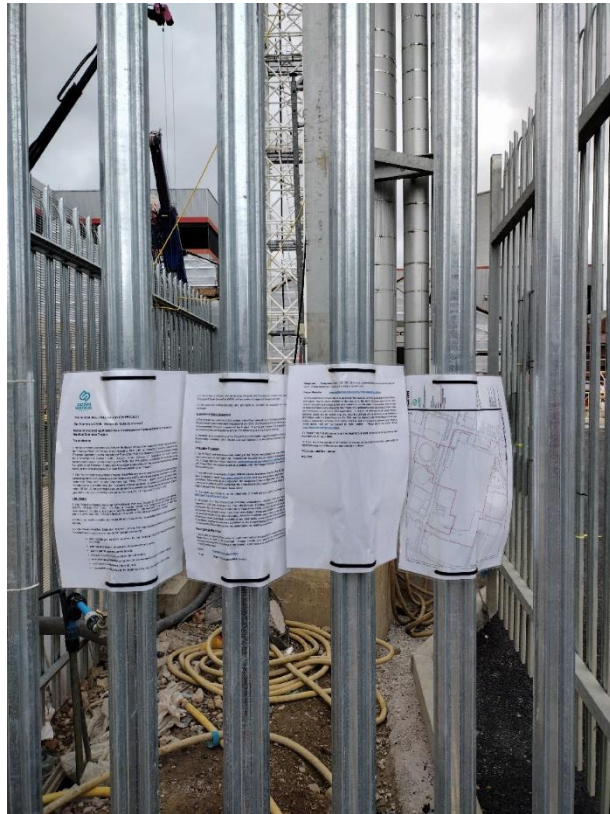
Week 1 – ATT10_Photo 1:



Week 2 – ATT31_Photo 2:



Week 3 – ATT50_Photo 3:



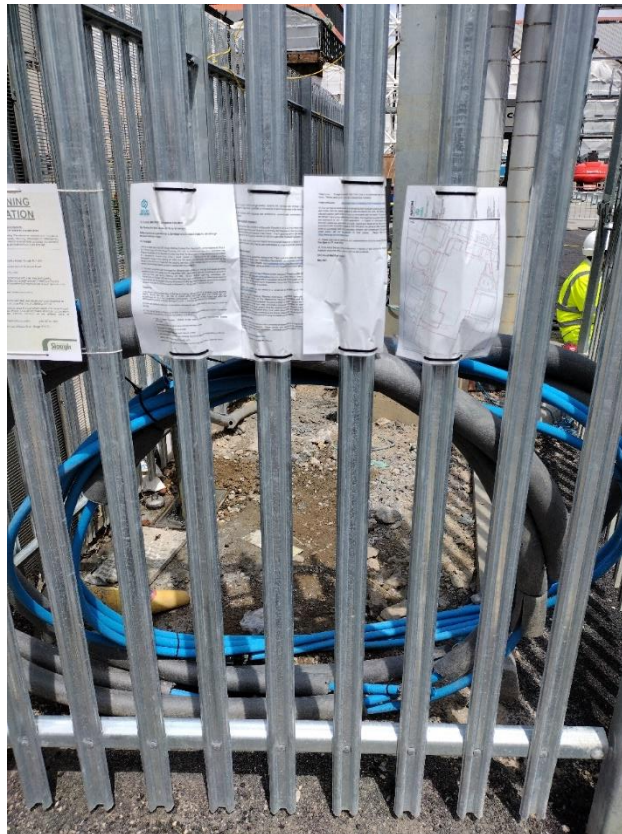
Week 4 – ATT70_Photo 4:



Week 5 – ATT90_Photo 5:



Week 6 – ATT108_Photo 6:



Notice Location: 5

Week 1 – ATT1_Photo 1:



Week 2 – ATT30_Photo 2:



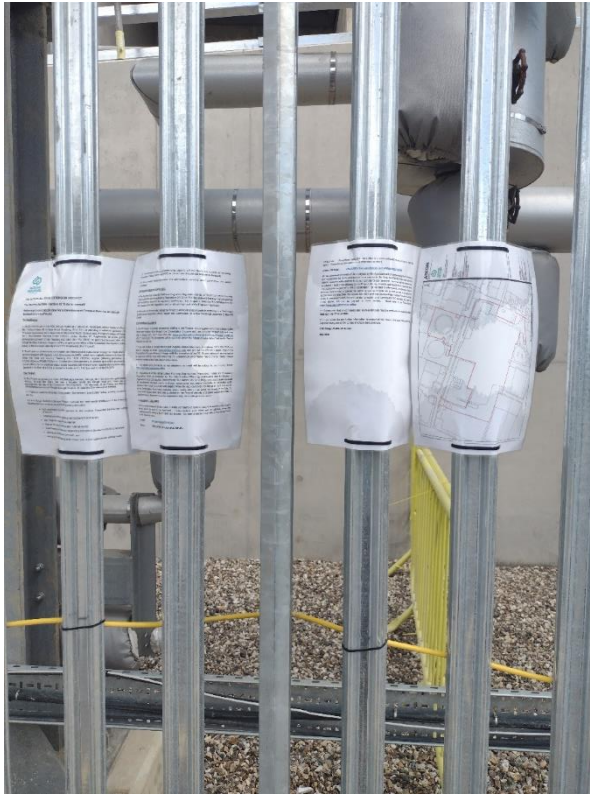
Week 3 – ATT51_Photo 3:



Week 4 – ATT71_Photo 4:



Week 5 – ATT91_Photo 5:



Week 6 – ATT109_Photo 6:



APPENDIX 3.7: SAMPLE EIA REGULATION 13 LETTER

Date: 3 May 2022

Our Ref: 15432



«Addressee»

«Address»

6 New Bridge Street
London EC4V 6AB

T: 020 7489 0213

F: 020 7248 4743

E: info@dwdllp.com

W: [REDACTED]

Also by email to: «Also_by_email_to»

Dear Sir/Madam,

THE SLOUGH MULTIFUEL EXTENSION PROJECT – LAND EITHER SIDE OF EDINBURGH AVENUE, SLOUGH TRADING ESTATE, SL1 4TU

CONSULTATION IN ACCORDANCE WITH SECTION 42 ‘DUTY TO CONSULT’ OF THE PLANNING ACT 2008 & REGULATION 13 ‘PRE-APPLICATION PUBLICITY UNDER SECTION 48 (DUTY TO PUBLICISE)’ OF THE INFRASTRUCTURE PLANNING (ENVIRONMENTAL IMPACT ASSESSMENT) REGULATIONS 2017

SSE Slough Multifuel Limited (the ‘Applicant’) is proposing to apply for development consent pursuant to Section 37 ‘Applications for orders granting development consent’ of the Planning Act 2008 (the ‘PA 2008’) from the Secretary of State for Business, Energy and Industrial Strategy (the ‘SoS’) for the construction of the Slough Multifuel Extension Project and the ongoing operation of the Consented Development (defined below) at the increased capacity of over 50 megawatts (hereafter referred to as the ‘Project’) on land either side of Edinburgh Avenue, Slough, SL1 4TU (the ‘Site’).

The Project comprises works to increase the efficiency and output of an energy from waste electricity generating station with capacity up to 50 megawatts (MW), which was originally consented in June 2017 under the Town and Country Planning Act 1990 (‘TCPA’) regime (Planning Ref. P/00987/024 and P/00987/025) (the ‘Consent Development’), to achieve up to 60MW peak electrical output (MWe). As the electrical output would exceed 50MW the Project requires development consent (granted in the form of a Development Consent Order) pursuant to Sections 31, 14(1)(a) and 15 of the PA 2008.

It is anticipated that the proposed application for development consent will be submitted to the Planning Inspectorate (‘PINS’), acting on behalf of the SoS for BEIS, during Quarter 3 2022.

Further information relating to the Project is provided in this letter and within the Consultation Documents, including a Preliminary Environmental Information (‘PEI’) Report and a Non-Technical Summary (‘NTS’). If you are receiving this letter in hard copy (paper) then a USB stick containing the Consultation Documents is enclosed along with a paper copy of the Site Location Plan. If you are receiving this letter via e-mail or cannot use the USB provided, a fileshare link is also provided within this letter as an alternative means to download the Consultation Documents. The Consultation Documents, and the various alternative methods of obtaining these, are described further toward the end of this letter.



Any comments and representations you may have on the Slough Multifuel Extension Project should be submitted to the Applicant no later than **5pm on Friday 17th June 2022**. Details of how to make comments/representations are provided toward the end of this letter.

Section 42 ‘Duty to consult’ & EIA Regulation 13 ‘Pre-application publicity under Section 48 (duty to publicise)’

Section 42 of the PA 2008 ‘Duty to consult’ requires prospective applicants for a DCO to consult on their proposed application with those persons specified in the PA 2008 and in regulations made pursuant to the PA 2008. These persons (‘prescribed persons’) include local authorities, prescribed consultation bodies and persons with various specified categories (for example those with a land interest). The consultation must be carried out prior to submitting the application for development consent to PINS.

The Applicant has identified a number of persons and organisations, which it is required to consult for the purposes of Section 42 of the PA 2008. It has been determined that you or your organisation is, or may be, a ‘prescribed person’ for the purposes of Section 42. The Applicant therefore wishes to seek your views on their proposals.

Section 48 of the PA 2008 ‘Duty to publicise’ also requires applicants for development consent to publicise their proposed application by publishing a notice (a ‘Section 48 Notice’) once in a national newspaper, once in the London Gazette for at least two successive weeks in a local newspaper circulating in the vicinity of the land to which the project relates.

Regulation 13 of ‘The Infrastructure Planning (Environmental Impact Assessment) Regulations 2017’ (the ‘EIA Regulations’) requires applicants, at the same time as publishing a Section 48 Notice, to send a copy of that notice to the ‘consultation bodies’ and to any person notified to the applicant by the SoS under EIA Regulation 11(1)(c).

A copy of the Section 48 Notice that is being published is appended to this letter.

We are not depositing paper copies of the Consultation Documents at any local public venues (such as libraries and community centres) following amendments made to Regulation 4 of the Infrastructure Planning (Applications: Prescribed Forms and Procedure) Regulations 2009. However, the Consultation Documents are available on the Project Website and paper copies can be made available on request – further details are provided below.

The Applicant

SSE Slough Multifuel Limited was established in April 2021 and is a 50:50 joint venture between SSE Thermal and Copenhagen Infrastructure Partners (CIP).

SSE Thermal, part of the FTSE-listed SSE plc, is a leading developer, owner and operator of flexible generation, energy-from-waste, and energy storage assets, with over 600 direct employees across the UK and Ireland. SSE Thermal’s vision is to become the leading provider of flexible thermal energy in a net-zero world. SSE Thermal was granted planning permission in June 2017 to construct the Consented Development at the Site. SSE Thermal currently operates the existing Slough Heat and Power Plant.

Copenhagen Infrastructure Partners (CIP) was founded in 2012 and is a fund management company specialised in offering tailor made investment in energy infrastructure assets globally, in particular within the renewable energy sector. CIP are renewable market pioneers with involvement in some of the World’s largest offshore wind projects and other major energy infrastructure projects in North-Western Europe, North America, and Asia Pacific. CIP has extensive biomass and energy from waste experience in the UK.

The Site

The Site is located within the Slough Heat and Power site and includes the site for the Consented Development. All elements of the Project are within the administrative boundary of Slough Borough Council. The Site encompasses land either side of land off Edinburgh Avenue, on the Slough Trading Estate, Slough, SL1 4TU (located a grid reference 495372, 181446). In total the Site extends 2.8 hectares (ha) and includes all parts of the Consented Development.

Project Description

The Slough Multifuel Extension Project involves the mechanical modification of the Consented Development and provision of additional systems including:

- heat exchanger bundles (internal to the existing Consented Development building envelope);
- external and internal above ground pipework and valves;
- pipe supports (external and internal);
- thermal insulation (external and internal works);
- instrumentation (internal to the existing Consented Development building envelope);
- cabling and containment (internal); and
- mechanical modifications to the steam turbine inlet control system (internal works).

The increase in efficiency and generating capacity will not require any increase in the hourly throughput of Waste Derived Fuel (WDF) or the number of approved deliveries to the facility.

The consented building structures and architecture, currently under construction, will remain unchanged.

Why is the Project needed?

The need for new electricity generating capacity of all types is set out in government policy – the Overarching National Policy Statement for Energy (NPS EN-1). This explains that the Government is implementing a variety of reforms in order to promote investment to replace ageing coal-fired and nuclear power infrastructure with safe, secure, affordable and increasingly low carbon supplies of energy.

Energy from waste is considered by the Government to be a renewable form of generation, as the principal purpose of the combustion of waste (as fuel) is to reduce the amount of waste going to landfill in accordance with the Waste Hierarchy and to recover useful energy from that waste. The Waste Hierarchy derives from the Waste Directive as implemented by the Waste (England and Wales) Regulations 2011. The Project would represent an efficient addition to the UK stock of energy from waste power stations; it allows more energy to be generated from the same throughput of WDF.

Environmental Impact Assessment

The Project is an Environmental Impact Assessment ('EIA') development for the purposes of EIA Regulations. The Applicant is therefore required to carry out an EIA of the Project and to submit an Environmental Statement ('ES') with the application for development consent, assessing the likely

significant effects arising from the Project on the environment. The Applicant has already notified the SoS under Regulation 8(1)(b) of the EIA Regulations that it proposes to provide an ES as part of the DCO application.

Environmental information which the Applicant has compiled is being made available during the Stage 2 Consultation on the Project in the form of a Preliminary Environmental Information ('PEI') Report and Non-Technical Summary ('NTS').

Consultation Documents

The following Consultation Documents are provided via USB (accompanying this letter) in order to assist you in considering and commenting on the Project:

- A Site Location Plan showing the extent of the Site edged in red (Ref. PEI Figure 2.1);
- the PEI Report and its NTS; and
- the Section 48 Notice that is being published.

If you are unable to use the USB device, the Consultation Documents are available to view and download free of charge from the Project Website: [REDACTED]

The above documents can also be downloaded from the following secure fileshare link: [REDACTED]

If you are unable to access the Project Website please telephone: Freephone 0800 335 7003 and leave a message or email: thermalenquiries@sse.com and you will be offered a paper copy of the Consultation Documents free of charge (with the exception of the PEI Report which will be charged at a maximum of £100). Please allow a week for receipt of documents via these methods.

Consultation Events

Two face-to-face consultation events will be held within the vicinity of the Site during May 2022. Details of the events are provided below:

Date	Venue	Time
18 May 2022	SSE Offices, 683/5 Stirling Road, SL1 4ST	15:00 to 19:00
25 May 2022	SSE Offices, 683/5 Stirling Road, SL1 4ST	10:00 to 14:00

Responding to the Consultation

Comments can be submitted in the following ways:

By email: thermalenquiries@sse.com

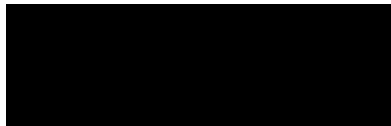
By post: FREEPOST SLOUGH MULTIFUEL (Please include your name and postal address)

By telephone: Freephone 0800 335 7003 (This is a voicemail-based service and can be called 24 hours. Please leave your name and a telephone number).

Any comments and representations you may have on the Slough Multifuel Extension Project should be submitted to the Applicant no later than **5pm on Friday 17 June 2022**.

The comments received to the consultation may be made public. However, no personal information will be published unless necessary (such as under a statutory duty which the Applicant or SoS has). We will comply with the requirements of the General Data Protection Regulation. It is important that you read our Privacy Policy, which is appended to this letter.

Yours faithfully



DWD on behalf of SSE Slough Multifuel

Enclosures:

- Site Location Plan (paper, or PDF on USB)
- Section 48 Notice (paper, or PDF on USB)
- Other Consultation Documents (USB stick)

Privacy Notice

This is the privacy notice for the Stage 2 Consultation of the Slough Multifuel Extension Project.

What personal data will we (SSE Slough Multifuel Limited) collect?

We will collect the following categories of personal data from you:

- Name
- Email address
- Postal address
- Telephone no.

How we will use your personal data for this Stage 2 Consultation

We will use your personal data for the following purposes:

- to record accurately and analyse any questions you raise or feedback you have provided in response to the consultation;
- to report on our consultation and notification, detailing what issues have been raised and how we have responded to that feedback;
- to personalise communications with individuals we are required to contact as part of future consultation or communications; and
- to deliver documents you have requested from us.

Our General Privacy Notice

This Privacy Notice is subject to the full terms of SSE's General Privacy Notice – a copy of which is available here: [\[REDACTED\]](#)